

FLYNEX

CONNECT APP
HOW IT WORKS

Version 3

IMPORTANT NOTE



We recommend **completing the initial setup** of your drone remote control **before flying** with the FlyNex Connect app for the first time. Please follow the installation and setup **instructions**.



TABLE OF CONTENTS

Start checklist for the first flight

What is the FlyNex Connect App	4
--------------------------------	---

Installation & Setup

System requirements	7
Download the installation file	8
Transfer files to device	9
Special case: RM-500 and M300 Controller	10
Install app	12
App permissions	14
Allow access	17
Optional: Install extension	18
App setup	20

User Manual

Login	24
Select and create projects	25
Overview of all projects	26
Flight	27
Other flight control	28
Media synchronization after flight	33
Data and media synchronization	35
Data synchronization	36
Media synchronization	37
Settings	44
Updates	45

START CHECKLIST FOR THE FIRST FLIGHT



1

I have the **access data** for my **FlyNex account**.

☐

2

I have **completed the setup** of the **FlyNex Connect App** (see chapter Installation & Setup).

☐

3

I have an **airworthy drone & remote control** (charged battery, ...).

☐

4

I have put an **SD card in the drone** for data storage.

☐

5

I have **obtained** all **permits to fly drones** at the operation site.

☐

6

I own a valid **flight license (A1/A3 or A2)** for this flight.

☐

WHAT IS THE FLYNEX CONNECT APP?

The **FlyNex Connect App** is a mobile application running on the remote-control device of your drone and acts as an interface between the drone and your **FlyNex account**.

The application allows you to synchronize project data with the FlyNex Platform, upload drone recordings to your account directly at the operation site or retrieve previously saved flight patterns and checklists on the controller. Your data can be transmitted immediately via mobile connection or by using WiFi or by saving it to an SD memory card.

With the following document, we would like to provide instructions for the safe use of the **FlyNex Connect App** as well as important information for the installation on your remote control.



FLYNEX

CONNECT APP
INSTALLATION & SETUP

SYSTEM REQUIREMENTS

The following devices can be used as hardware in conjunction with the FlyNex Connect App:

- **DJI Controller RM510B, RM500, DJI RC Plus, DJI RC Plus 2 and M300 Controller**
- **Smartphones and Tablets with Android OS**

The installation of the FlyNex Connect App requires the following:

- OS: Android 5.1 or newer version
- GPS connection
- Temporary internet connection (mobile or WiFi)
- Optional: support for memory cards



DOWNLOAD THE INSTALLATION FILE

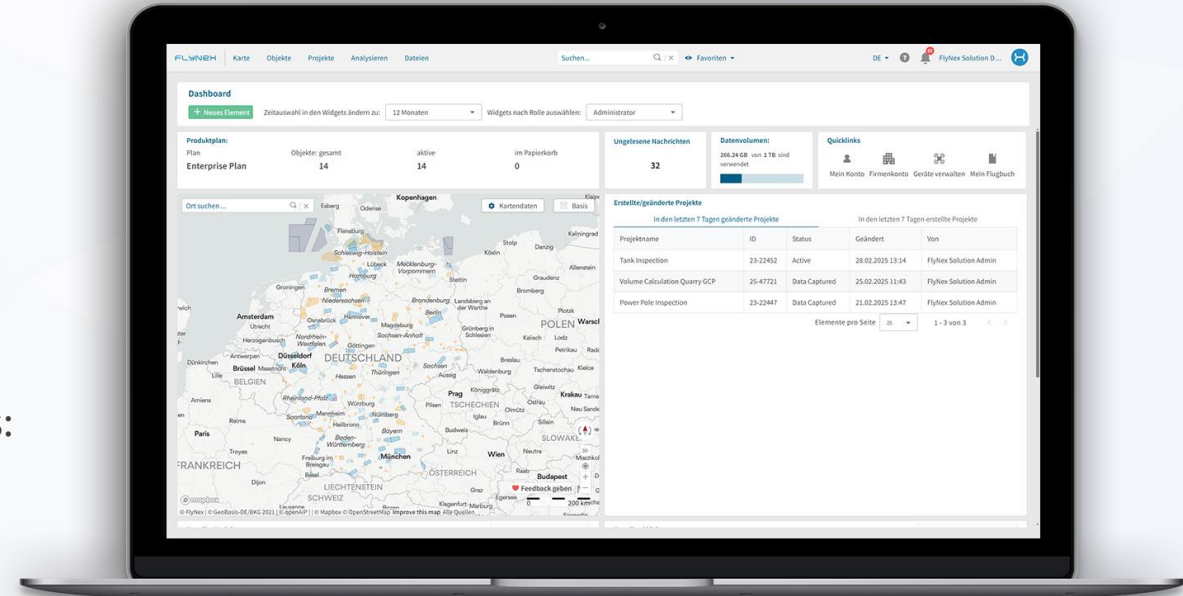
Please download the installation file for the **FlyNex Connect App**.

Choose one option:

- Find it in your company account on the FlyNex Platform under “Tools” or
- Get it from the FlyNex Website (www.flynex.io) under Downloads:



www.flynex.io/downloads/



TRANSFER FILES TO DEVICE

- Please connect your device to the PC via USB.
- After connecting to the PC, your device will appear in Windows as **This PC** or **My Computer**. Double click on the device and look for the folder „Download“ or „Downloads“. Now copy the installation file into this folder.

Note: If your device has a slot for SD memory cards, it is also possible to transfer the installation file to a memory card and insert it into the device.

SPECIAL CASE: RM-500 AND M300 CONTROLLER (1)

To use the **FlyNex Connect App** with a RM-500 or M300 Controller it is necessary to install an alternative browser. We recommend the open source browser **Brave**.

Please carry out the following steps:

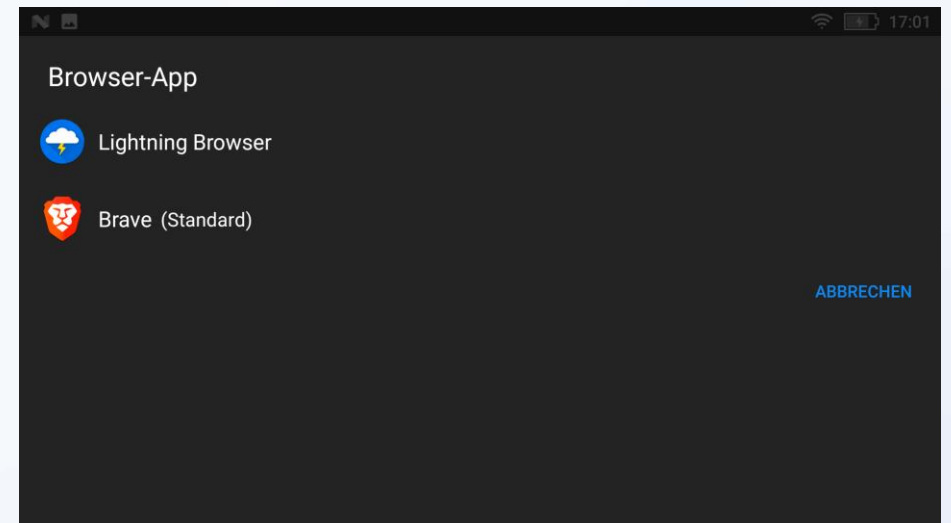
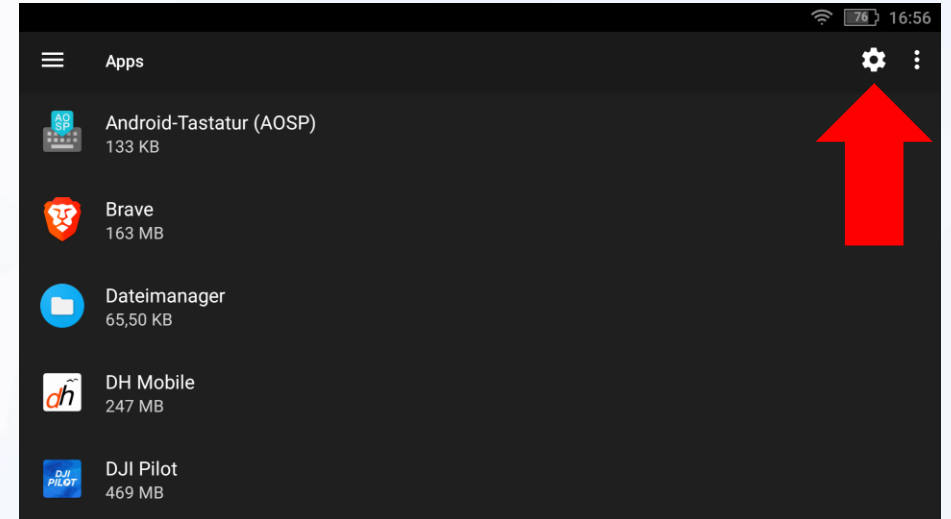
- Download the installation file for the **Brave** browser
- Install the file (see chapters: Transfer files to device and Install app)
- Configuration of the new browser as the default browser (see next page)



SPECIAL CASE: RM-500 AND M300 CONTROLLER (2)

To configure the default browser, please follow these steps:

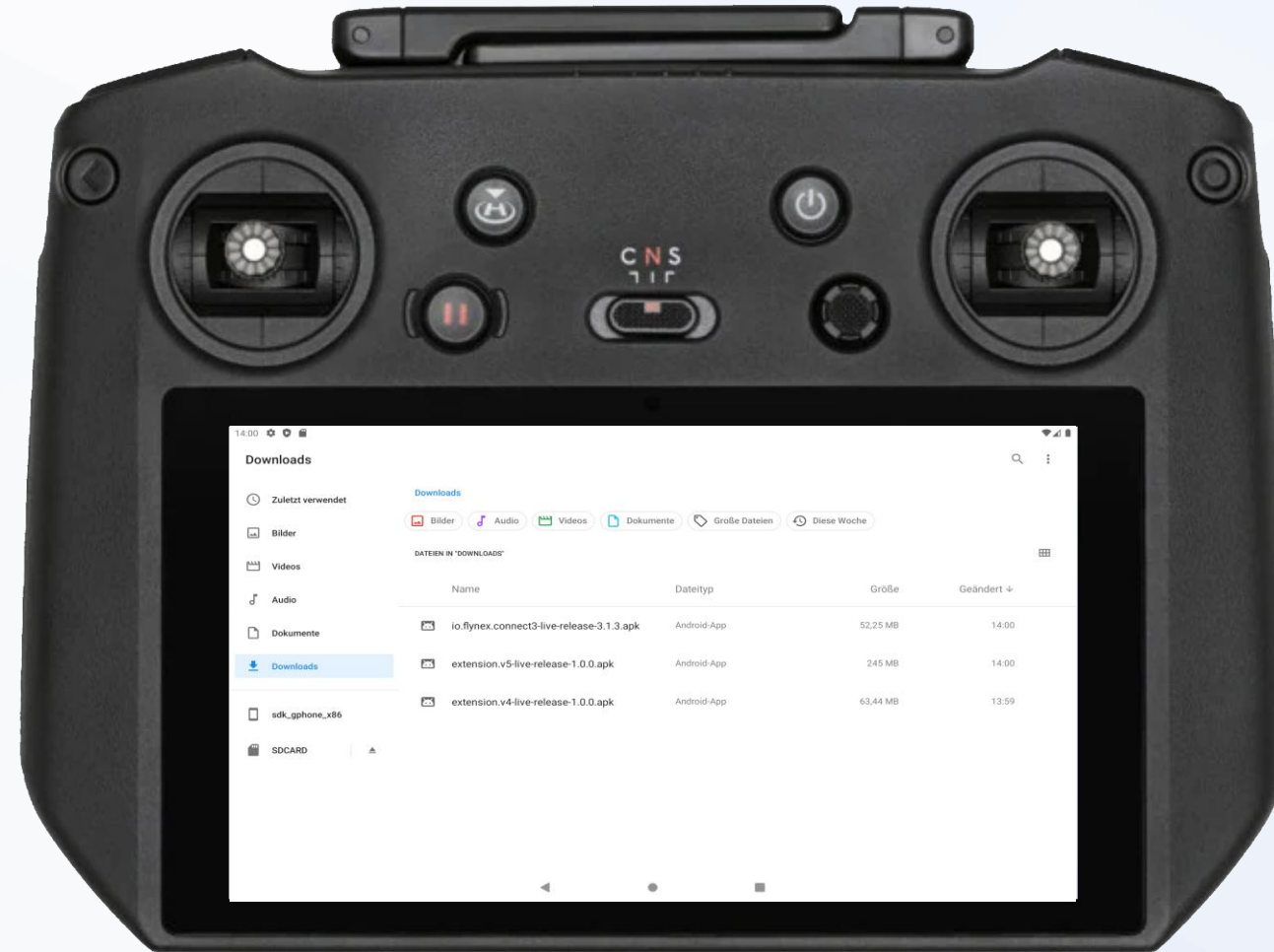
1. Open the settings on the Smart Controller and select **Apps**. Open the **App settings** there.
2. After opening the app settings, tap **Browser App**. Now the installed browsers are listed. Select **Brave** and choose it as the default browser.



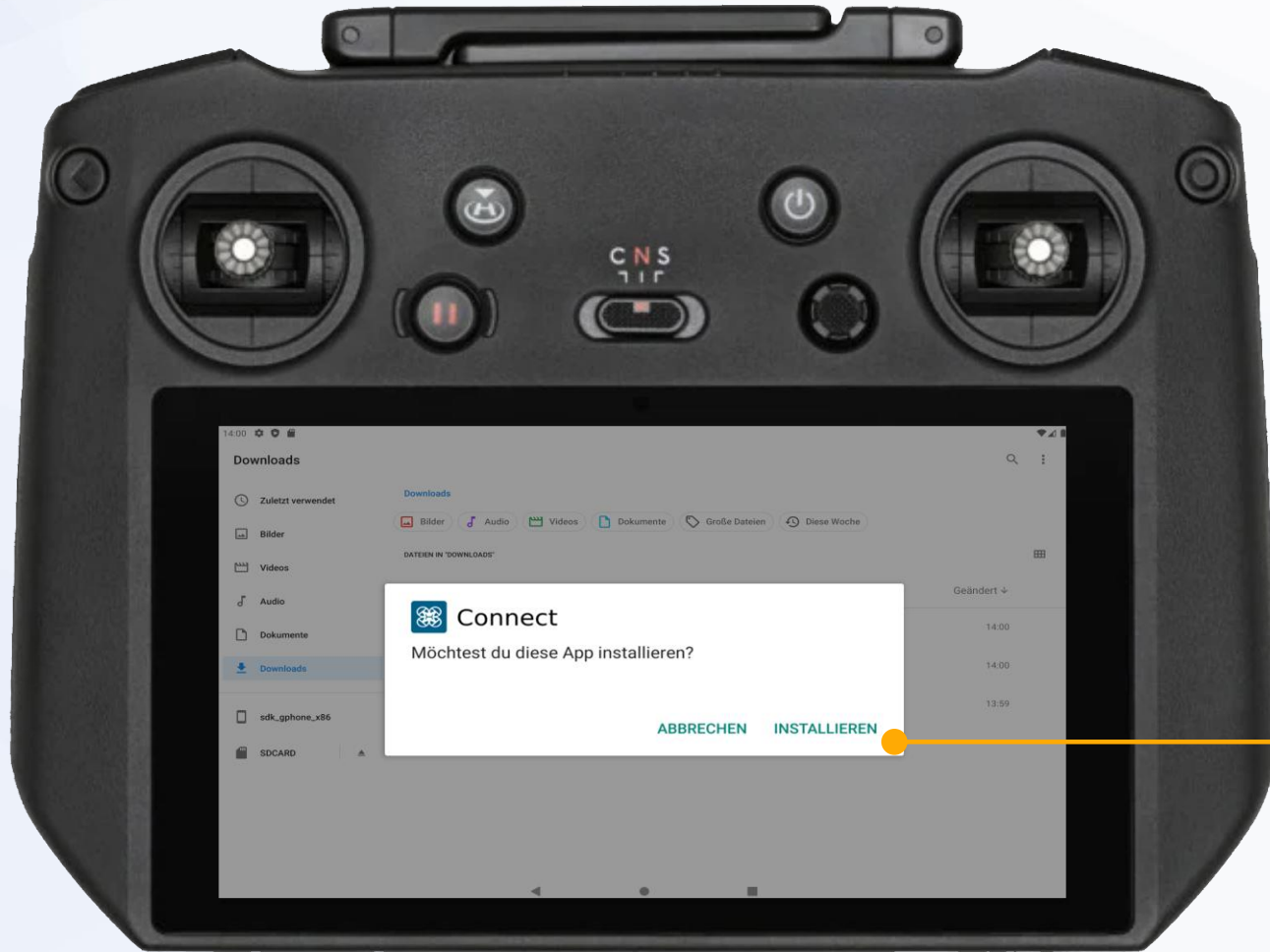
INSTALL APP (1)

- Please ensure that the installation file is on the device or on the SD memory card inserted into the device.
- For installation, please use the **Downloads** section on your device or access the memory card. Use the file explorer installed on the device for this. The transferred installation package will be displayed here. Tap on it to start installation.

After installation, the **FlyNex Connect App** is available in the app overview of your device.



INSTALL APP (2)

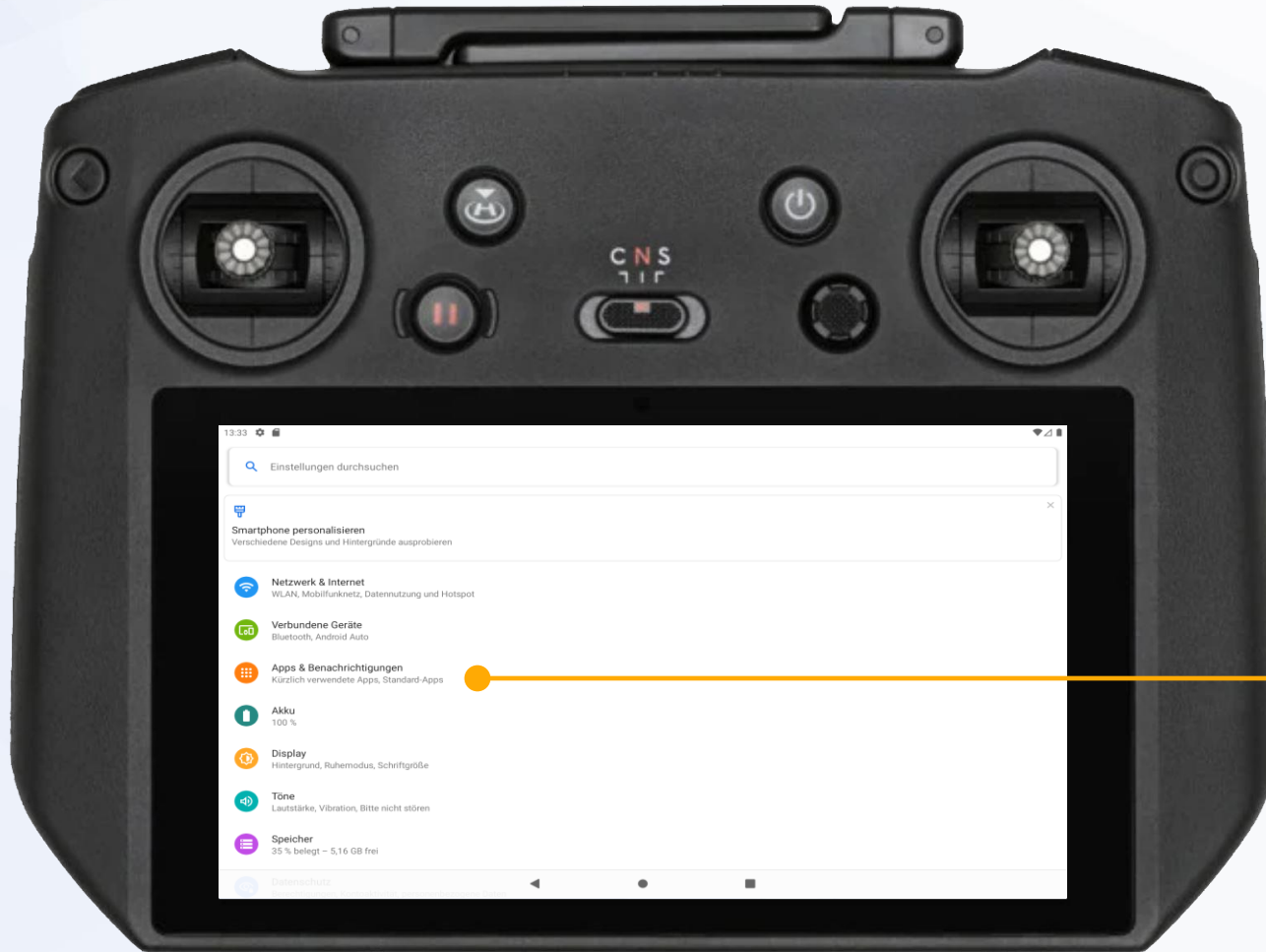


Installation

Confirm with **INSTALL** (agree to instructions on using the app if necessary)

Complete the process with **DONE**.

APP PERMISSIONS (1)



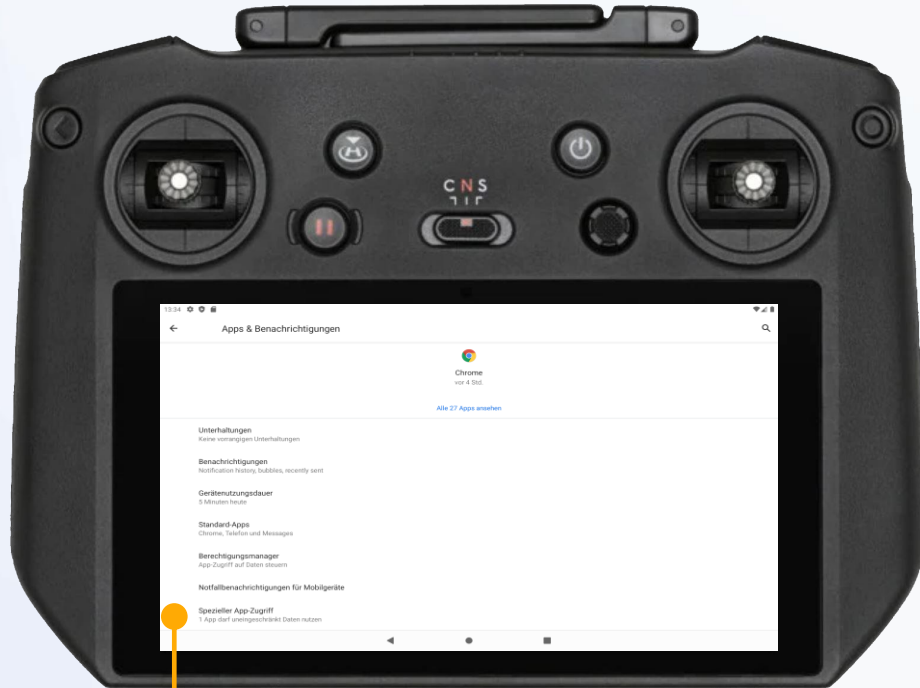
Set permissions

To use the FlyNex Connect app, some settings are required on your device. To do this, please open the „Settings“ area of your controller and set the permissions as described below.

Apps & Permissions

Tap

APP PERMISSIONS (2)



Special app access
Tap

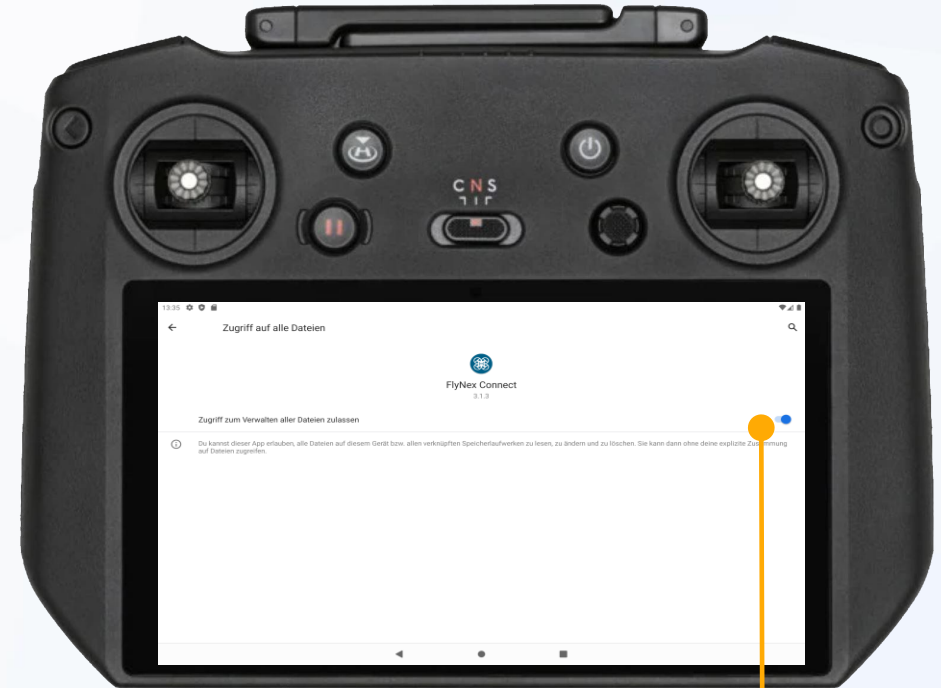


Access to all files
Tap

APP PERMISSION (3)



FlyNex Connect
Open app settings



Activate
Allow app access

ALLOW ACCESS

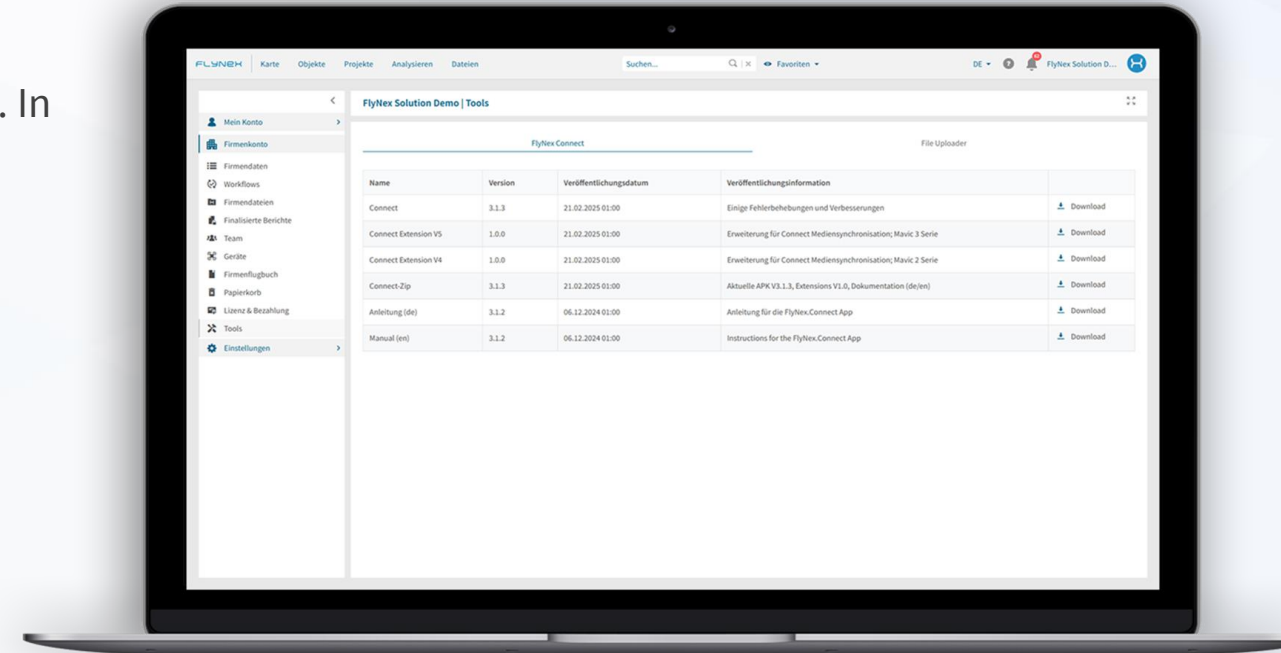


To be able to use the FlyNex Connect app, please **allow** FlyNex Connect **to access** your location as well as photos, media and files when you initially open the app after completing the installation.

OPTIONAL: INSTALL EXTENSION (1)

Note: The installation of an extension is necessary if you want to synchronize recorded media directly from the drone with FlyNex. In this case, there is no need to insert the memory card into the controller for synchronization.

- Download the installation file for the **FlyNex Connect Extension** via your company account on the FlyNex platform in the “Tools” section.



Version: For DJI drone models of the Mavic 2 series, please download the extension V4. For all newer models from Mavic 3 onwards, extension V5 is required. Please install only one of the two versions.

Requirement: First the installation of the FlyNex Connect app must be completed, then the extension can be installed.

OPTIONAL: INSTALL EXTENSION (2)



Installation

Please navigate to the **Downloads** area on your device and tap on the installation package of the desired extension (see chapter: Install app). Follow the installation instructions. At the end, you will receive a message that the app has been successfully installed. Now tap on “DONE” and then open the FlyNex Connect app.

Note: If the extension has been installed correctly, it is possible to synchronize media directly from the drone in the FlyNex Connect app. Otherwise, this function is deactivated in the FlyNex Connect app and cannot be selected.

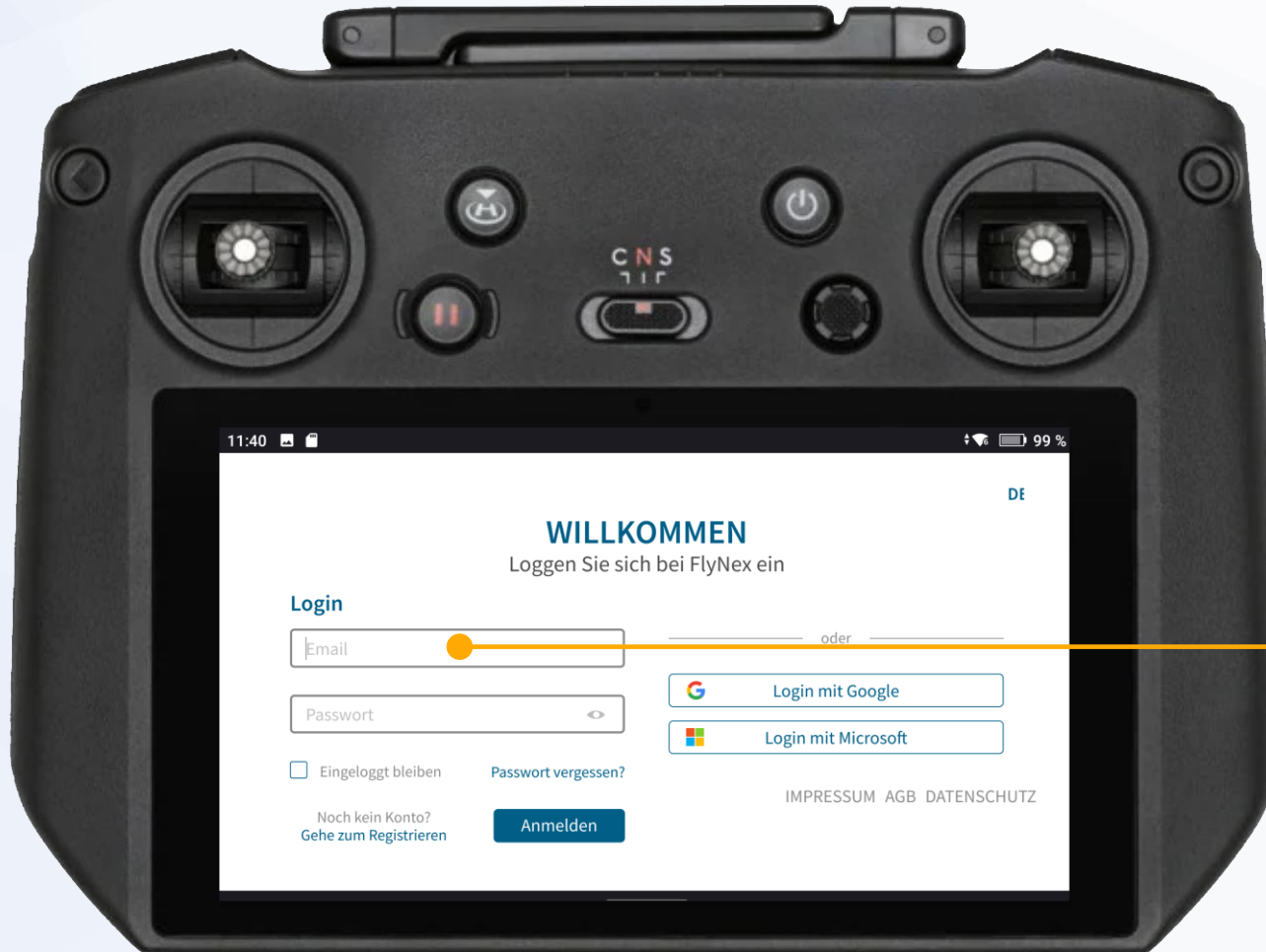
APP SETUP (1)



Login

Continue with **Login**.

APP SETUP (2)



Login

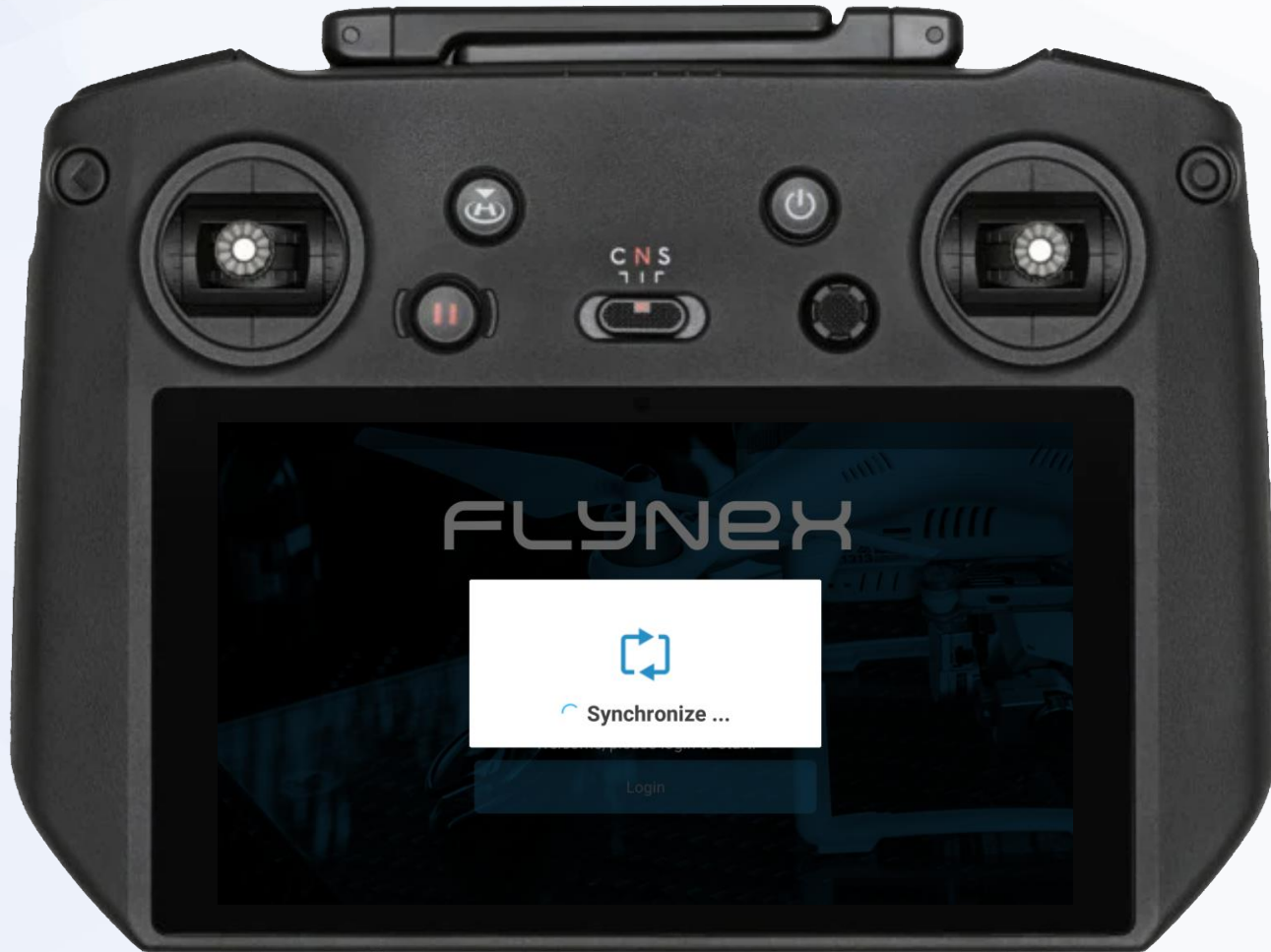
Enter your email and password for your FlyNex account. If you do not know them, please contact your administrator.

If you do not have a FlyNex account yet, create a new one at app.flynex.io.

Confirm your data with the **Log in** button.

Note: If you are unable to log in, please contact your administrator. If you have any further questions, please contact our support (support@flynex.de).

APP SETUP(3)



Synchronization of your FlyNex account

After your **first** FlyNex Connect App **login**, all available data from your FlyNex account will be synchronized with the **FlyNex Connect App**.

This process requires an **Internet connection** and **may take a few minutes**.

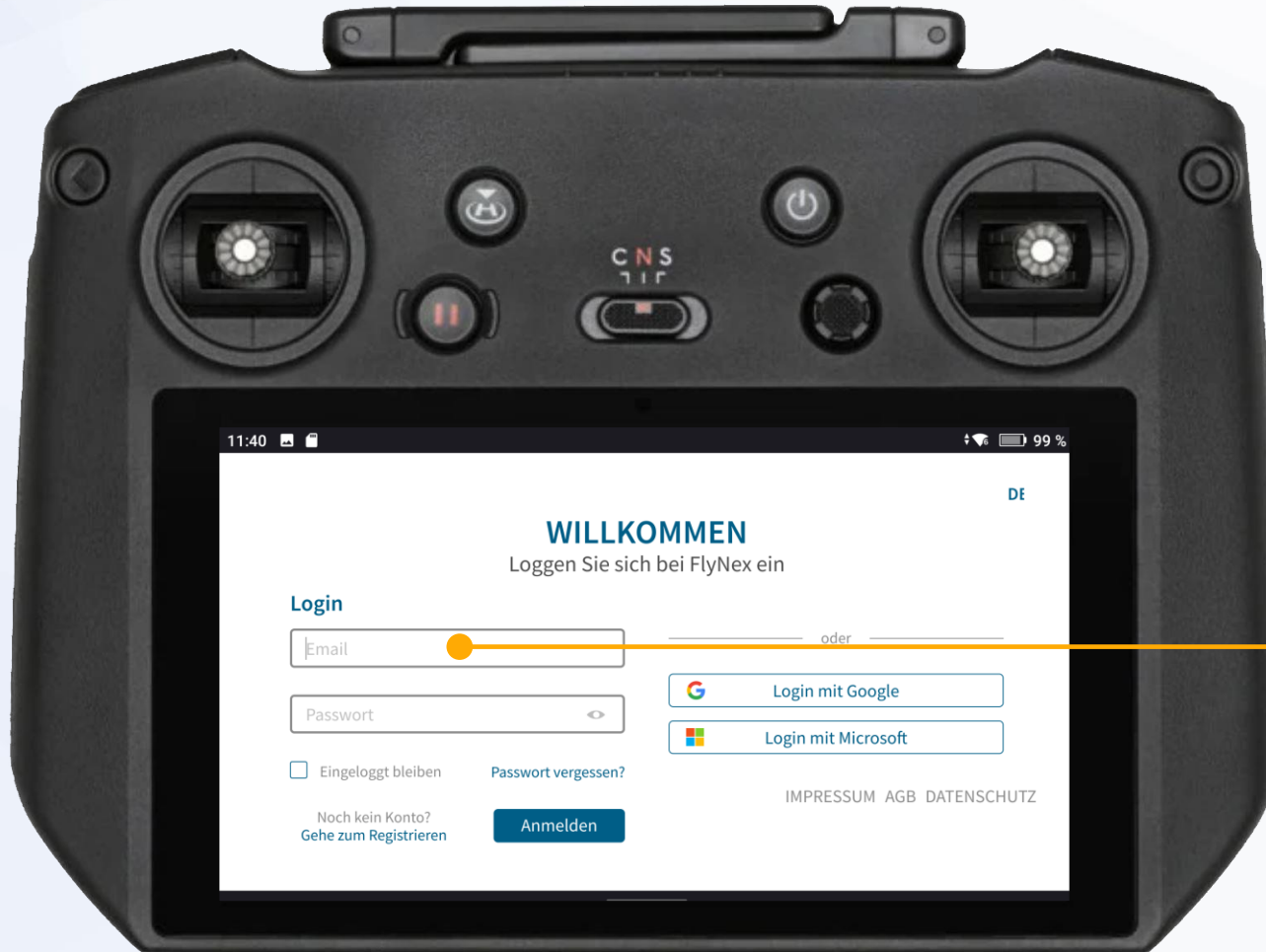
After synchronization, **the setup is complete**. You now have access to all projects in which you are involved via your FlyNex account.

For more information regarding the operation of the FlyNex Connect App, please refer to the following pages.

FLYNEX

CONNECT APP
USER MANUAL

LOGIN



Login

Please log in to your FlyNex account.

If you are logging in for the first time, please follow the instructions for setting up the app (see chapter: „App setup“).

Confirm your data with the **Log in** button.

SELECT AND CREATE PROJECTS



Select project

Select your flight project. Use the synchronized projects for the current day or from the desired period.

Note: Only projects you are assigned to with your FlyNex account will be displayed.

Create project

You have not created a project before or are not involved in any project? Please select **Create new project** to create a new project directly in the FlyNex Connect App. It will be synchronized with your FlyNex account.

Skip project selection

Admins have the option of assigning standard projects to their pilots in the FlyNex platform settings. The project selection can then be skipped in the FlyNex Connect app.

OVERVIEW OF ALL PROJECTS

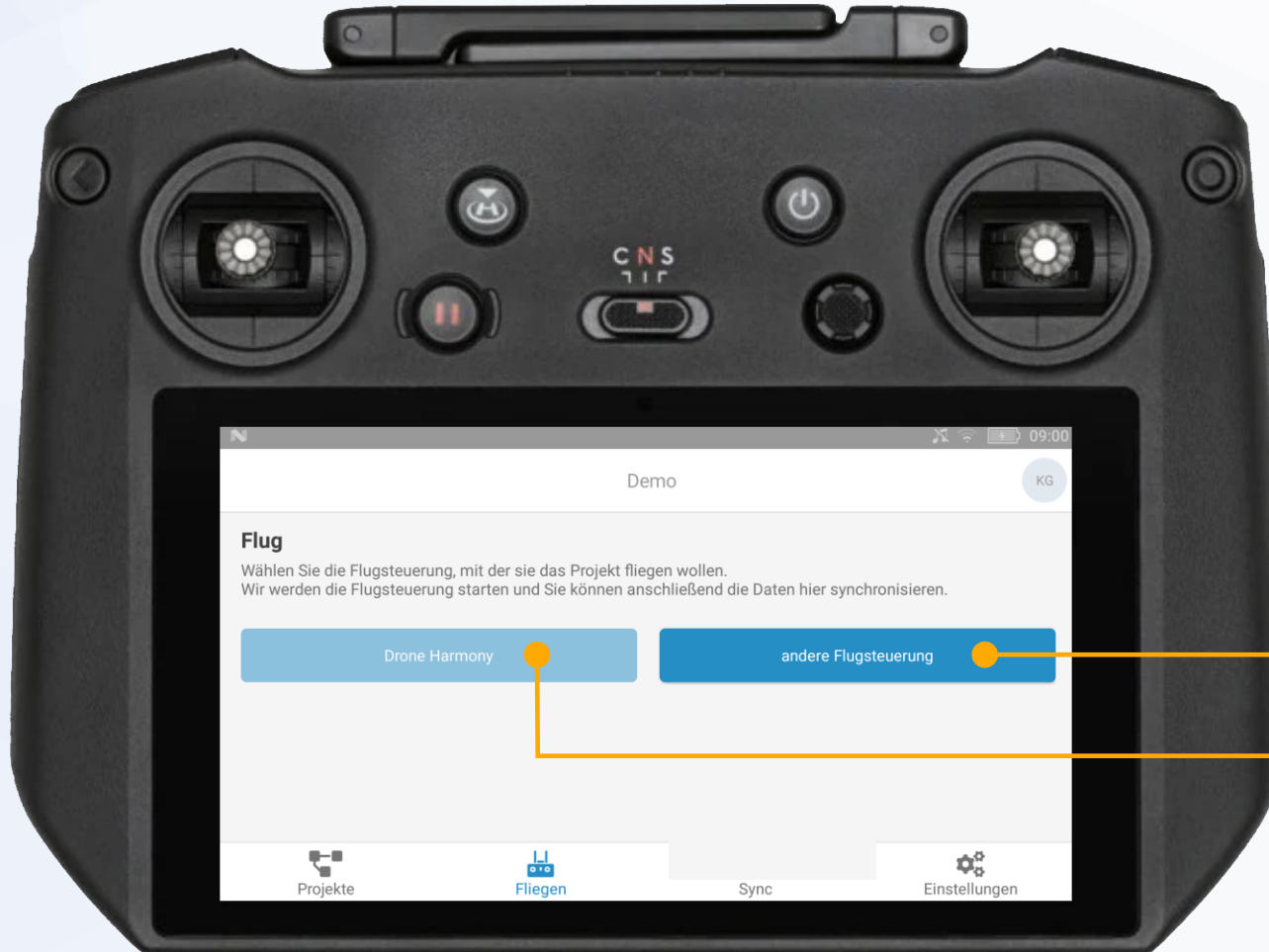


Search project

If you cannot find your project, use the project overview to search in certain time periods and select your project.

Note: Only projects you are assigned to with your FlyNex account will be displayed.

FLIGHT



Other flight control

Choose **Other flight control**, to perform a flight with another flight software (see chapter: Other flight control).

Auto flights with Drone Harmony

Choose **Drone Harmony**, if a flight plan has already been created in the web application.

Drone Harmony will be opened automatically, where the automated flight can then be started.

OTHER FLIGHT CONTROL(1)



Start and end flight

After selecting **Other flight control** another window will be opened where the checklist can be edited and confirmed.

Choose **To checklists** for editing.

OTHER FLIGHT CONTROL(2)



Start and end flight

Use the checklist to check and document all safety-related questions before the flight and **Confirm**.

Note: To customize the checklist, please contact our support (support@flynex.de).

OTHER FLIGHT CONTROL(3)



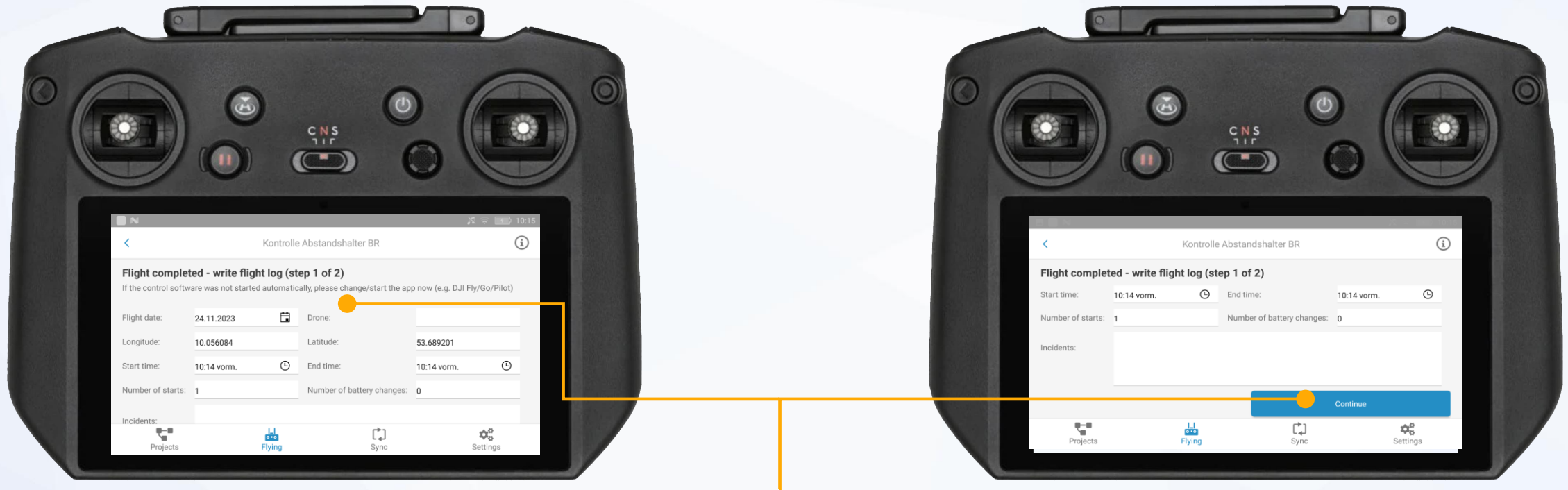
Start and end flight

Once the checklist has been confirmed, another window opens where you can use any pre-installed flight software.

- Select one of the installed flight software and **carry out the flight**.
- After completing the flight, land your drone and end the process with the hardware button (see *-button in the top right image).

Note: The flight software will close, and you will get back to the FlyNex Connect App.

OTHER FLIGHT CONTROL(4)



Write flight log

Once the flight software is closed, the flight log in the **FlyNex Connect App** will be opened.

- Enter all relevant information here.
- Confirm the entries with **Continue** and **Save** at the end.

Notes: Some fields are pre-filled based on the project data, location and time.

Admins can activate the skip flight entry function in the FlyNex platform settings. In this case, this step is omitted in the FlyNex Connect app.

MEDIA SYNCHRONIZATION AFTER FLIGHT (1)



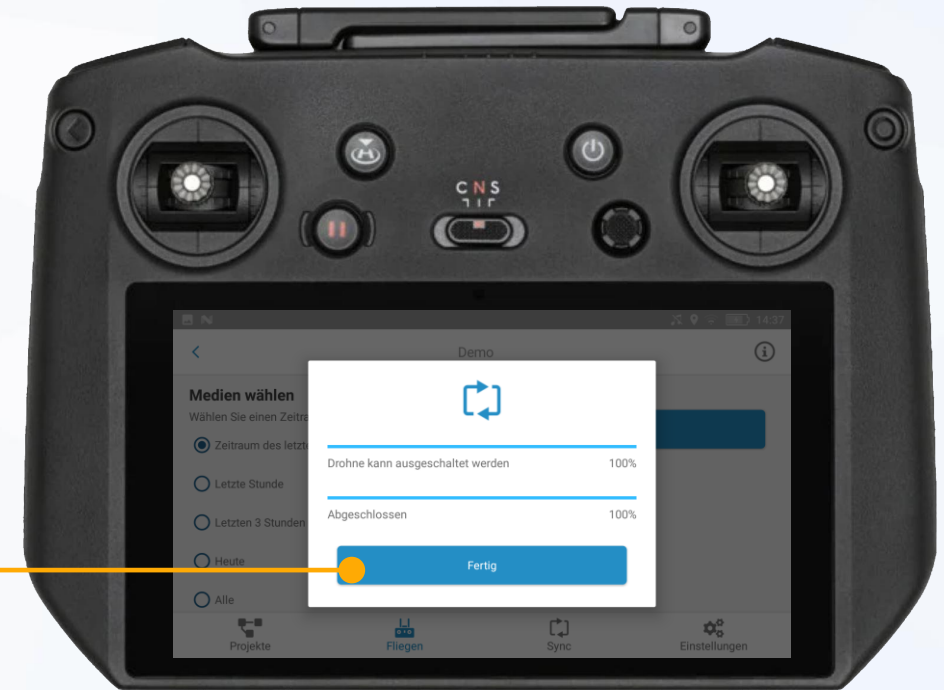
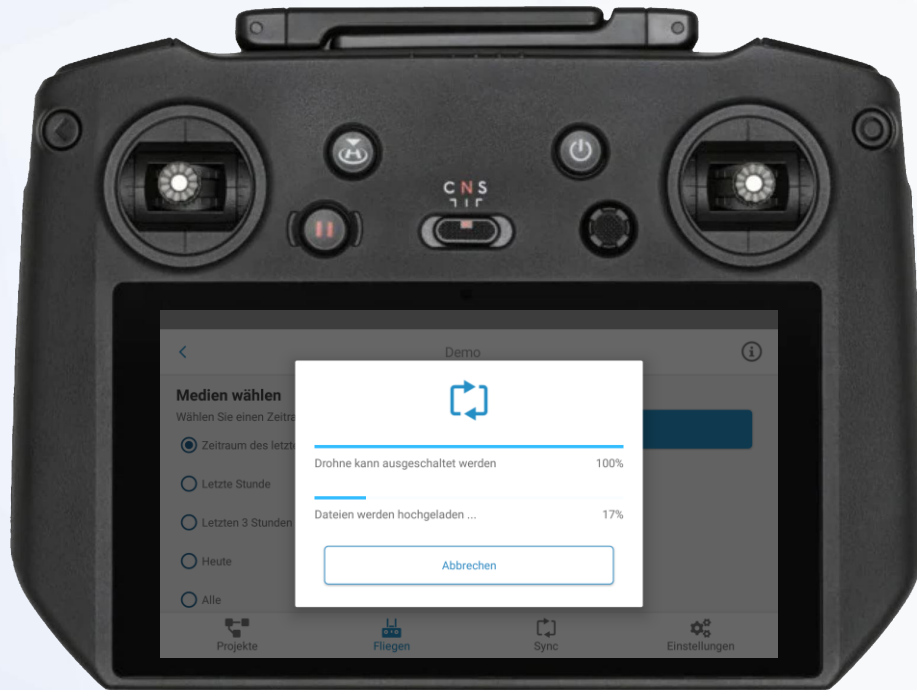
Select media source & time period

To synchronize the recorded media from the drone with your FlyNex account directly after the flight, you need an **extension** (see chapter Optional: Install extension). If you choose the drone option, please select the time period for which the recorded media should be synchronized and tap **Start**.

Note: If you have not installed an extension, the **Drone** option is not available.

Alternatively, you can transfer the recorded media using a **memory card**. To do this, please insert the memory card into your flight control device and follow the instructions (see chapter: Media synchronization).

MEDIA SYNCHRONIZATION AFTER FLIGHT (2)



Synchronizing media

After **synchronization** has been started, your recorded data is first transferred from the drone to the controller (upper loading bar). As soon as this **process is complete**, you can **switch off the drone**.

The lower loading bar shows the progress of the media transfer from the controller to the FlyNex platform. As soon as all data has been transferred, you can end the process with **Done**. You will now find your recorded media in the corresponding **project** in your FlyNex account.

DATA AND MEDIA SYNCHRONIZATION



Data synchronization

After your flight, select **Sync data** to synchronize your flight data for the flight log, your flight routes and created flight patterns with your **FlyNex account**.

Media synchronization

To sync your drone recordings with your FlyNex account, you can use the **Sync media** option to either synchronize data directly from the drone (extension required) or by inserting the SD memory card from the drone into the remote control device.

Note: Please ensure you have a stable internet connection to transfer your data and media.

DATA SYNCHRONIZATION



Synchronize data

Manual synchronization of data is useful if you have performed offline flights or if no synchronization has taken place for some time. The synchronized data includes flight data, flight patterns and flight routes. To start data synchronization, please tap **Sync data** and then **Synchronize manually**.

Note: A stable Internet connection is required for data transmission.

MEDIA SYNCHRONIZATION (1)

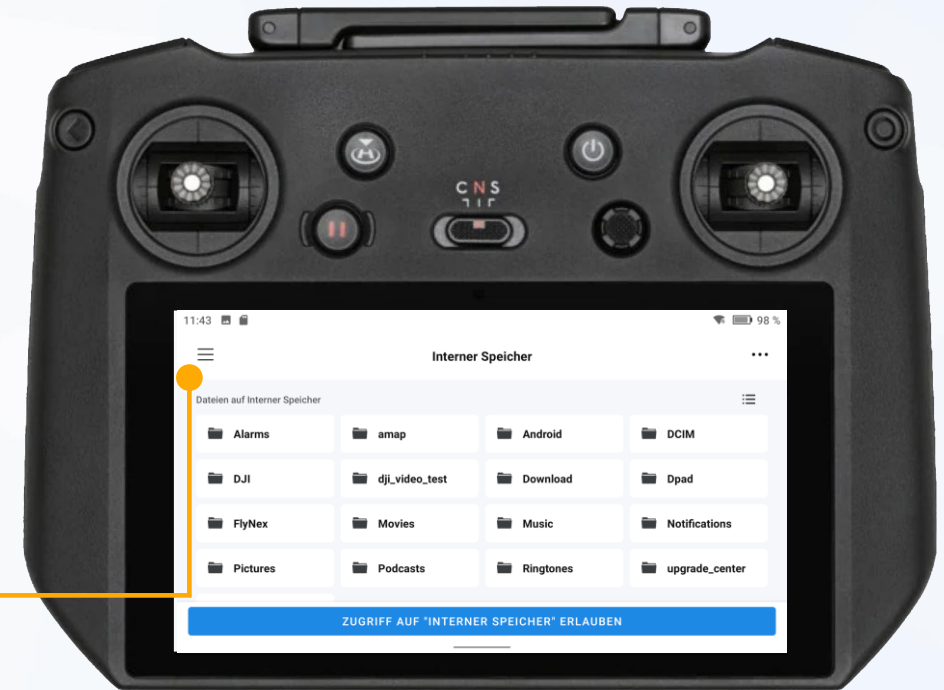


Synchronize media

To start media synchronization from the memory card, click on **Memory card** and next to „No storage found“ tap on **Click here** at the bottom left.

Note: The explanation of media synchronization from the drone can be found in the chapter “Media synchronization after flight”.

MEDIA SYNCHRONIZATION (2)



Synchronize media

Select the main directory of the SD card on the next screen.

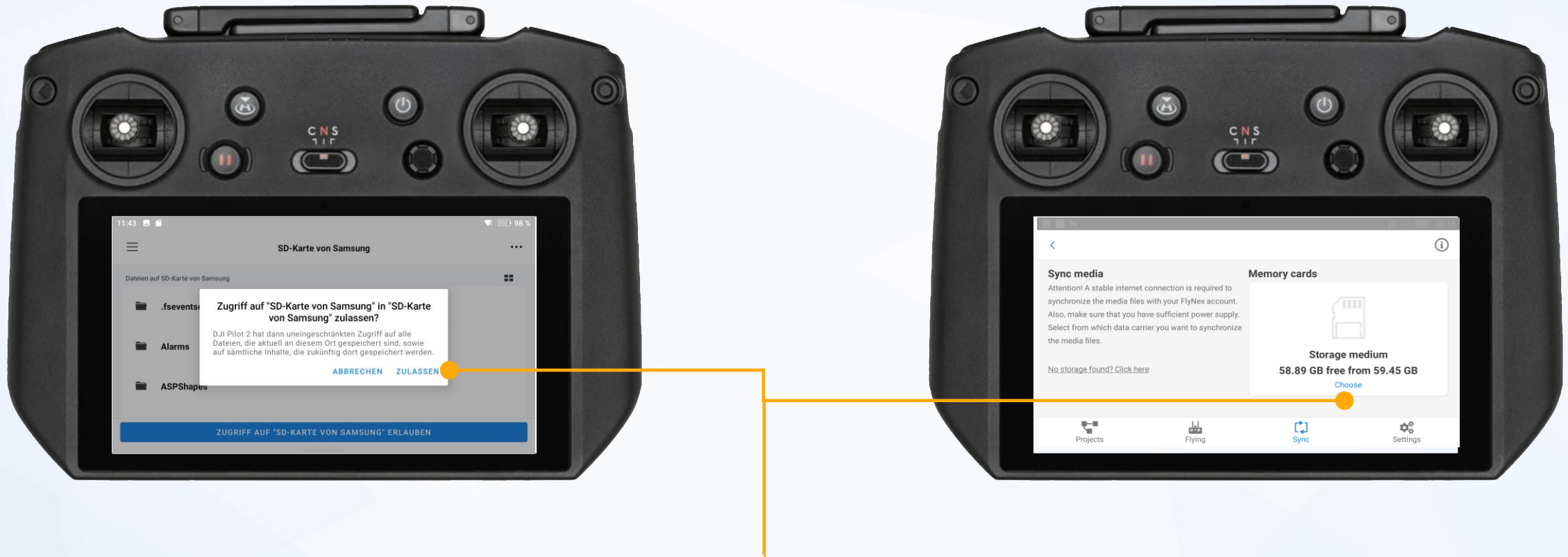
MEDIA SYNCHRONIZATION (3)



Synchronize media

Select the main directory of the SD card and confirm access.

MEDIA SYNCHRONIZATION (4)



Synchronize media

Allow access to the SD memory card.

The memory card is now displayed and you can open it by tapping **Choose**.

MEDIA SYNCHRONIZATION (5)



Synchronize media

Before the media can be uploaded, a unique assignment is required.

To achieve this, click on **New assignment** und and then select the media in the files section with **change**.

MEDIA SYNCHRONIZATION (6)



Synchronize media

Select the media and confirm on the top right.

- In the next step, please select a project into which the media should be synchronized.
- To select a project, click on **change** in the project section.

MEDIA SYNCHRONIZATION (7)

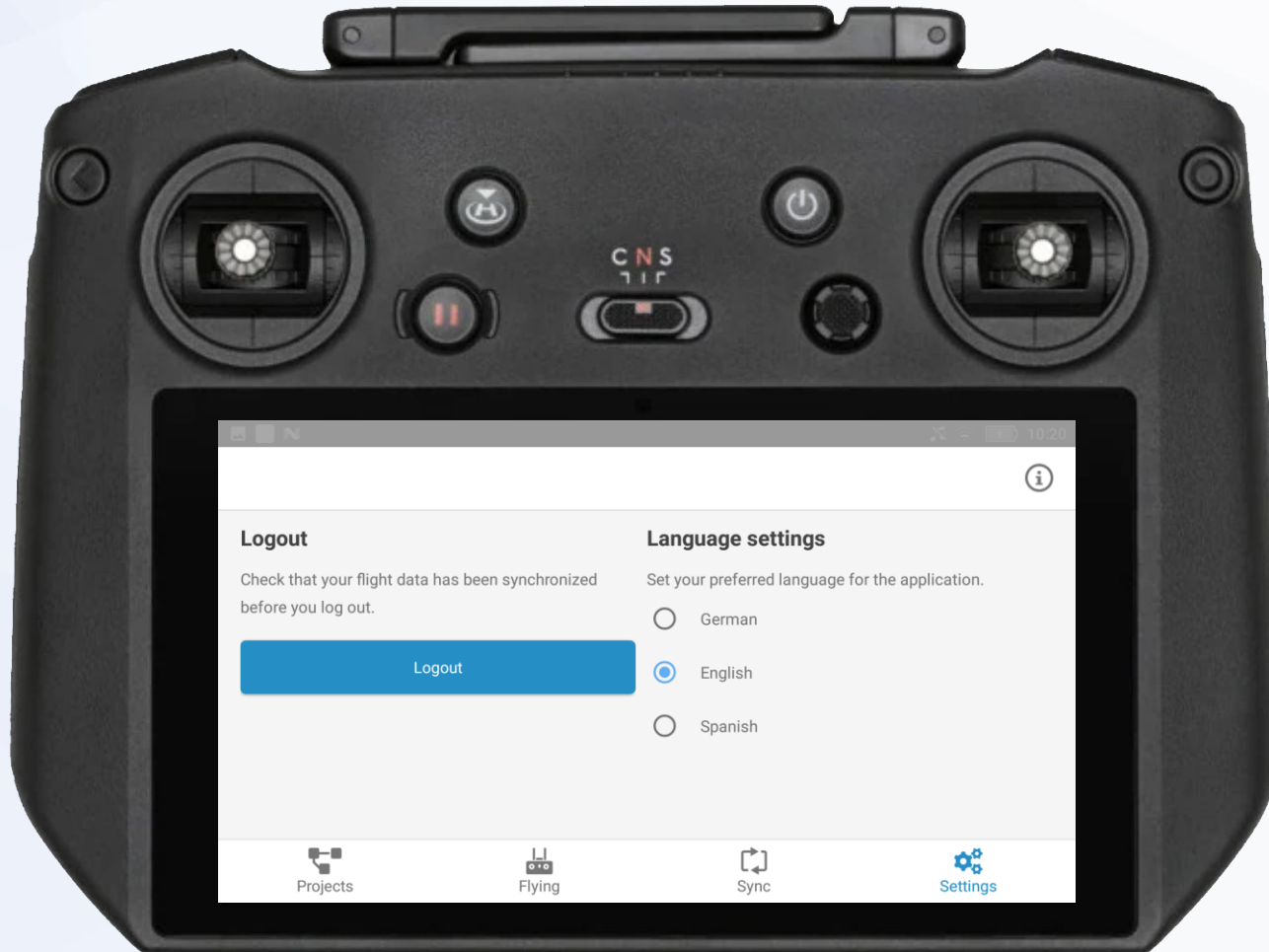


Synchronize media

Select the project in which the media is to be synchronized and start the upload with **Start**.

Note: You can also create additional assignments before your start synchronization.

SETTINGS



Logout

If you want to log out after a flight or sign in another user, please tap **Logout**.

Log in again prior to the next flight with an existing Internet connection.

Note: Perform synchronization prior to each logout to avoid data loss (see chapter “Data and media synchronization”).

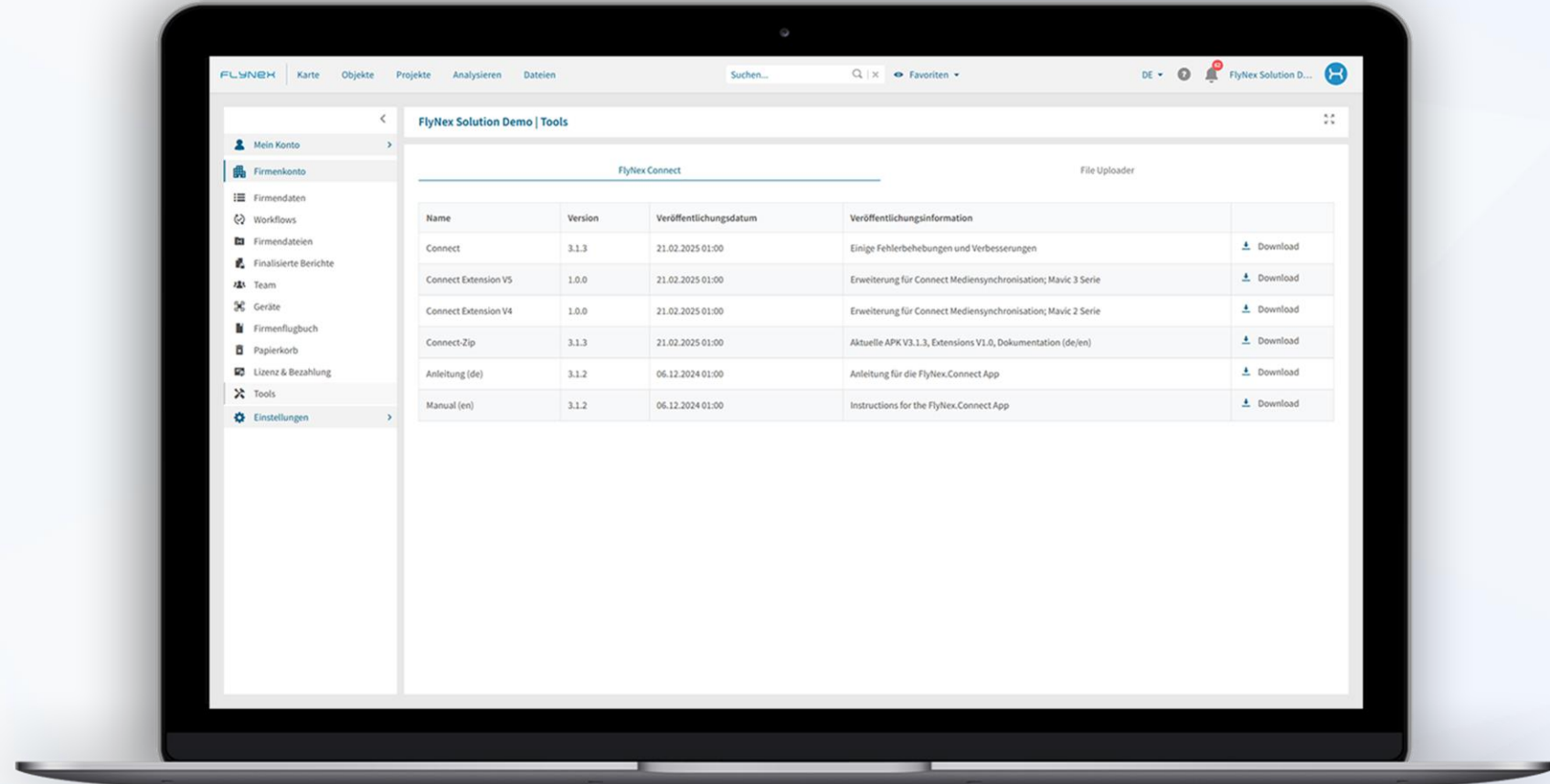
Language settings

You can switch between available languages here.

UPDATES

As soon as a new version of the **FlyNex Connect App** is available, you will see a message when you open the app. You can then start the **automatic update process** directly.

For a **manual update**, you can find the latest version of the FlyNex Connect app as an installation file on our website or in your company account (see chapter: Download the installation file). In this case, please uninstall the old version first.



FLYNEX

CONTACT

Do you have any questions about the FlyNex Connect App or the FlyNex Platform?

We are happy to help.

support@flynex.de
www.flynex.io

