

FLYNEX

CONNECT APP
HOW IT WORKS

Version 3

IMPORTANT NOTE



We recommend **completing the initial setup** of your drone remote control **before flying** with the FlyNex Connect app for the first time. Please follow the installation and setup **instructions**.



CONTENTS

Start checklist for the first flight..... 4
What is the FlyNex Connect App?.....5

Installation & Setup

System requirements.....7
Download the installation file..... 8
Transfer files to device.....9
Install app.....12
App setup.....17

User Manual

Login.....21
Select and create projects.....22
Overview of all projects.....23
Flight.....24
Other flight control.....25

Live streaming..... 30
Data and media synchronization.....36
Data synchronization.....37
Media synchronization.....38
Settings.....45
Updates.....46

START CHECKLIST FOR THE FIRST FLIGHT



1

I have the **access data** for my **FlyNex account**.

☐

2

I have **completed the setup** of the **FlyNex Connect App** (see chapter Installation & Setup).

☐

3

I have an **airworthy drone & remote control** (charged battery, ...).

☐

4

I have put an **SD card in the drone** for data storage.

☐

5

I have **obtained** all **permits to fly drones** at the operation site.

☐

6

I own a valid **flight license (A1/A3 or A2)** for this flight.

☐

WHAT IS THE FLYNEX CONNECT APP?

The **FlyNex Connect App** is a mobile application running on the remote-control device of your drone and acts as an interface between the drone and your **FlyNex account**.

The application allows you to synchronize project data with the FlyNex Platform, upload drone recordings to your account directly at the operation site or retrieve previously saved flight patterns and checklists on the controller. Your data can be transmitted immediately via mobile connection or by using WiFi or by saving it to an SD memory card.

With the following document, we would like to provide instructions for the safe use of the **FlyNex Connect App** as well as important information for the installation on your remote control.



FLYNEX

CONNECT APP
INSTALLATION & SETUP

SYSTEM REQUIREMENTS

The following devices can be used as hardware in conjunction with the FlyNex Connect App:

- **DJI Controller RM510B, RM500, DJI RC Plus and M300 Controller**
- **Smartphones and Tablets with Android OS**

The installation of the FlyNex Connect App requires the following:

- OS: Android 5.1 or newer version
- GPS connection
- Temporary internet connection (mobile or WiFi)
- Optional: support for memory cards



DOWNLOAD THE INSTALLATION FILE

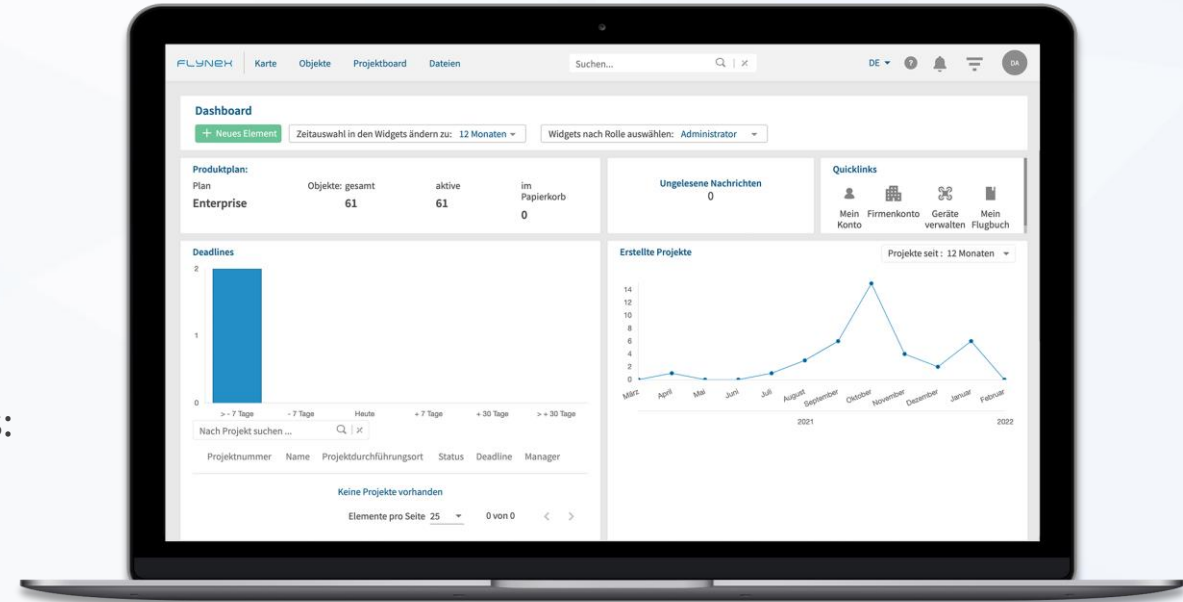
Please download the installation file for the **FlyNex Connect App**.

Choose one option:

- Find it in your company account on the FlyNex Platform under “Tools” or
- Get it from the FlyNex Website (www.flynex.io) under Downloads:



www.flynex.io/downloads/



TRANSFER FILES TO DEVICE

- Please connect your device to the PC via USB.
- After connecting to the PC, your device will appear in Windows as **This PC** or **My Computer**. Double click on the device and look for the folder „Download“ or „Downloads“. Now copy the installation file into this folder.

Note: If your device has a slot for SD memory cards, it is also possible to transfer the installation file to a memory card and insert it into the device.

INSTALLATION FOR DJI SMART CONTROLLER

To use the **FlyNex Connect App** it is necessary to install an alternative browser. The pre-installed browser does not meet the security requirements of the FlyNex Platform. We recommend the Open Source browser **Brave**.

Please follow these steps:

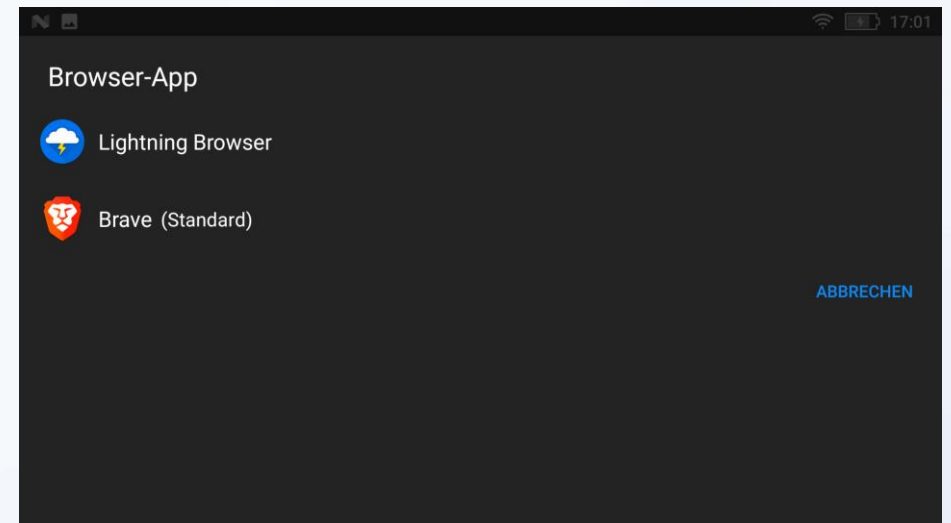
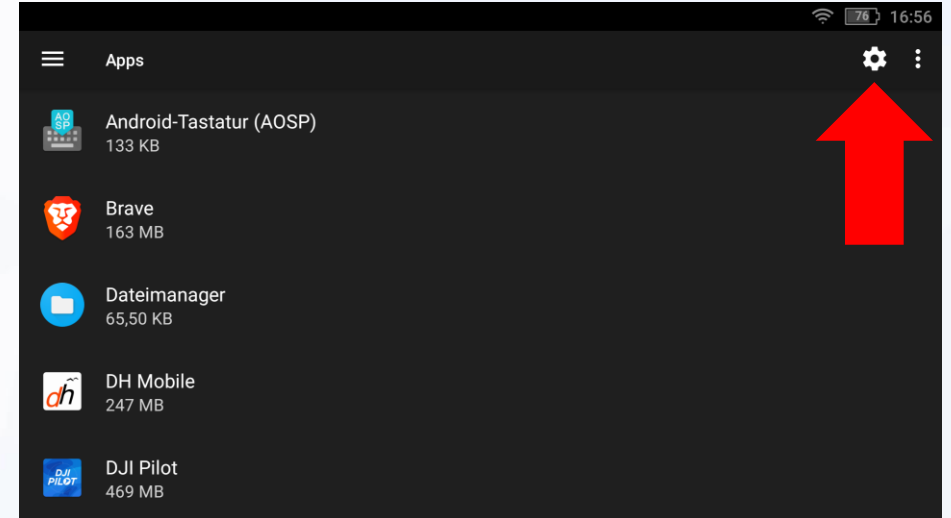
- Download the installation file for the browser **Brave**
- Install the file (see also “Transfer files to device” and “Install app”)
- Configuration of the new browser Brave as the default browser (see next page)



INSTALLATION FOR DJI SMART CONTROLLER

To configure the default browser, please follow these steps:

1. Open the settings on the Smart Controller and select **Apps**. Open the app settings there.
2. After opening the app settings, tap **Browser App**. Now the installed browsers are listed. Select **Brave** and choose it as the default browser.



INSTALL APP (1)

- Please ensure that the installation file is on the device or on the SD memory card inserted into the device.
- For installation, please use the **Downloads** section on your device or access the memory card. Use the file explorer installed on the device for this. The transferred installation package will be displayed here. Tap on it to start installation.

After installation, the **FlyNex Connect App** is available in the app overview of your device.



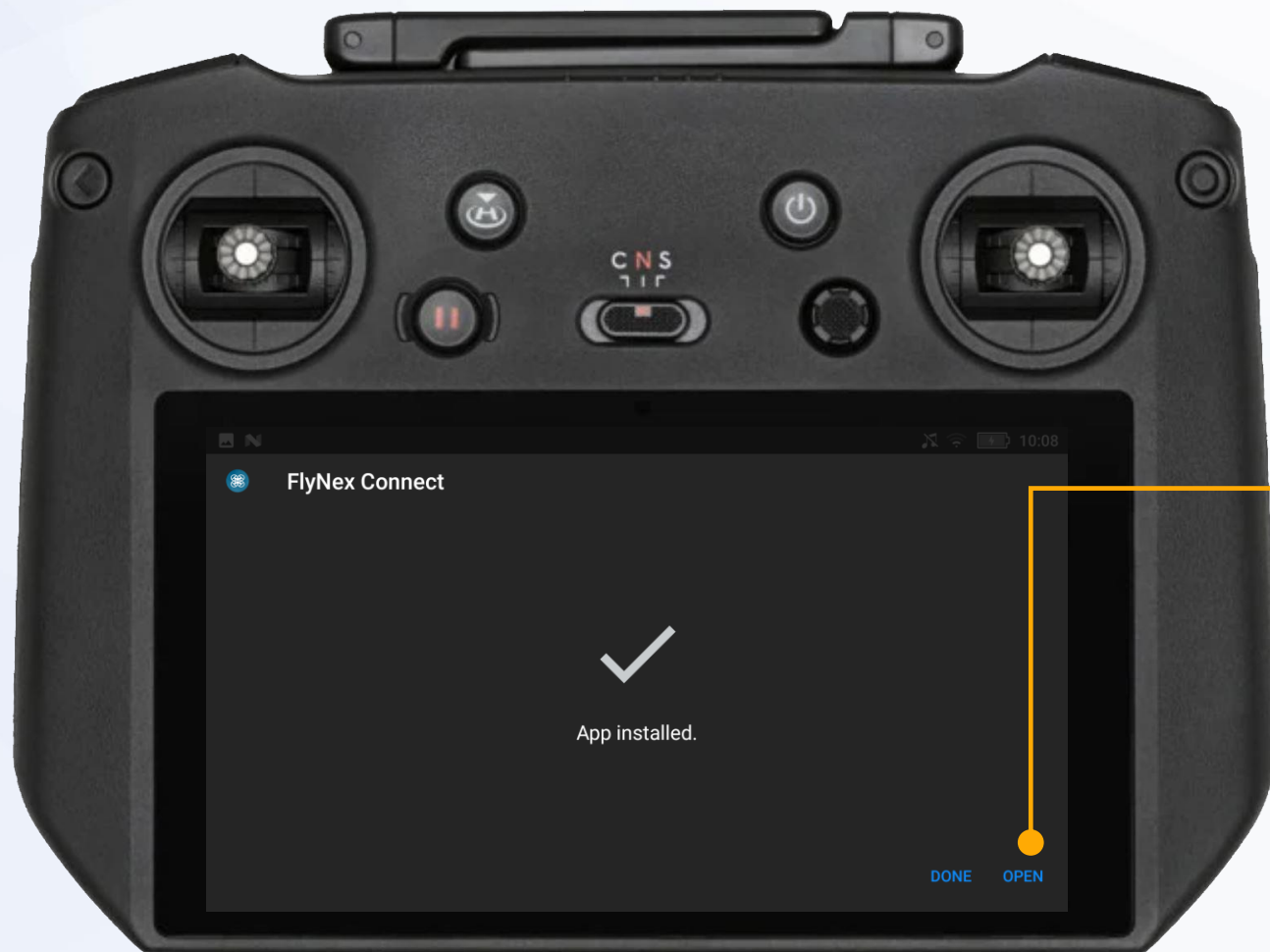
INSTALL APP (2)



Installation

Confirm with **Install**.

INSTALL APP (3)



Installation

Confirm with **Open**.

INSTALL APP (4)



Installation

Grant access with **Allow**.

INSTALL APP (5)



Installation

Grant access with **Allow**.

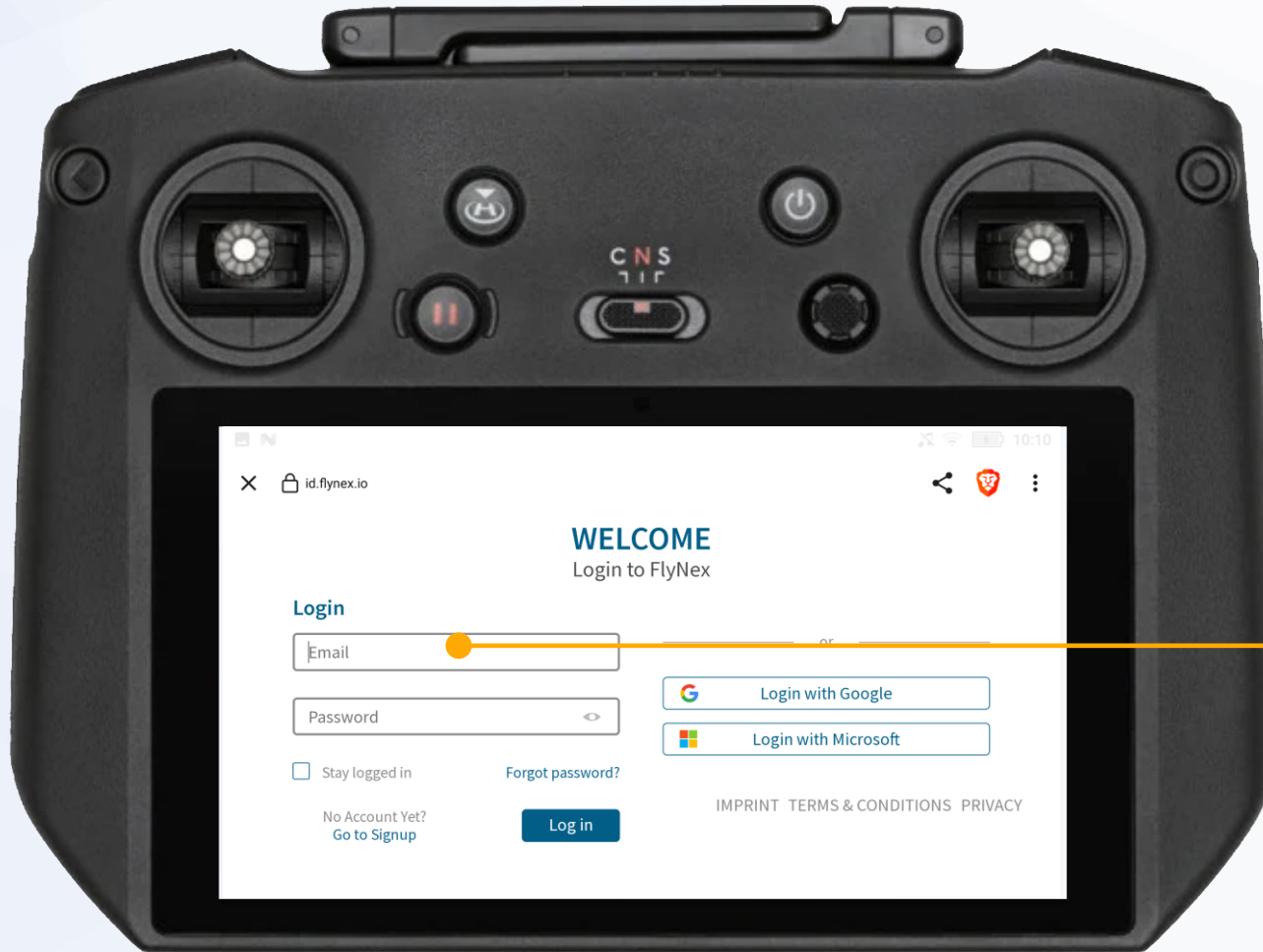
APP SETUP (1)



Login

Continue with **Login**.

APP SETUP (2)



Login

Enter your email and password for your FlyNex account. If you do not know them, please contact your administrator.

If you do not have a FlyNex account yet, create a new one at app.flynex.io.

Confirm your data with the **Log in** button.

Note: If you are unable to log in, please contact your administrator or check your plan in the company account on the FlyNex platform. If you have any further questions, please contact our support.

APP SETUP(3)



Synchronization of your FlyNex account

After your **first** FlyNex Connect App **login**, all available data from your FlyNex account will be synchronized with the **FlyNex Connect App**.

This process requires an **Internet connection** and **may take a few minutes**.

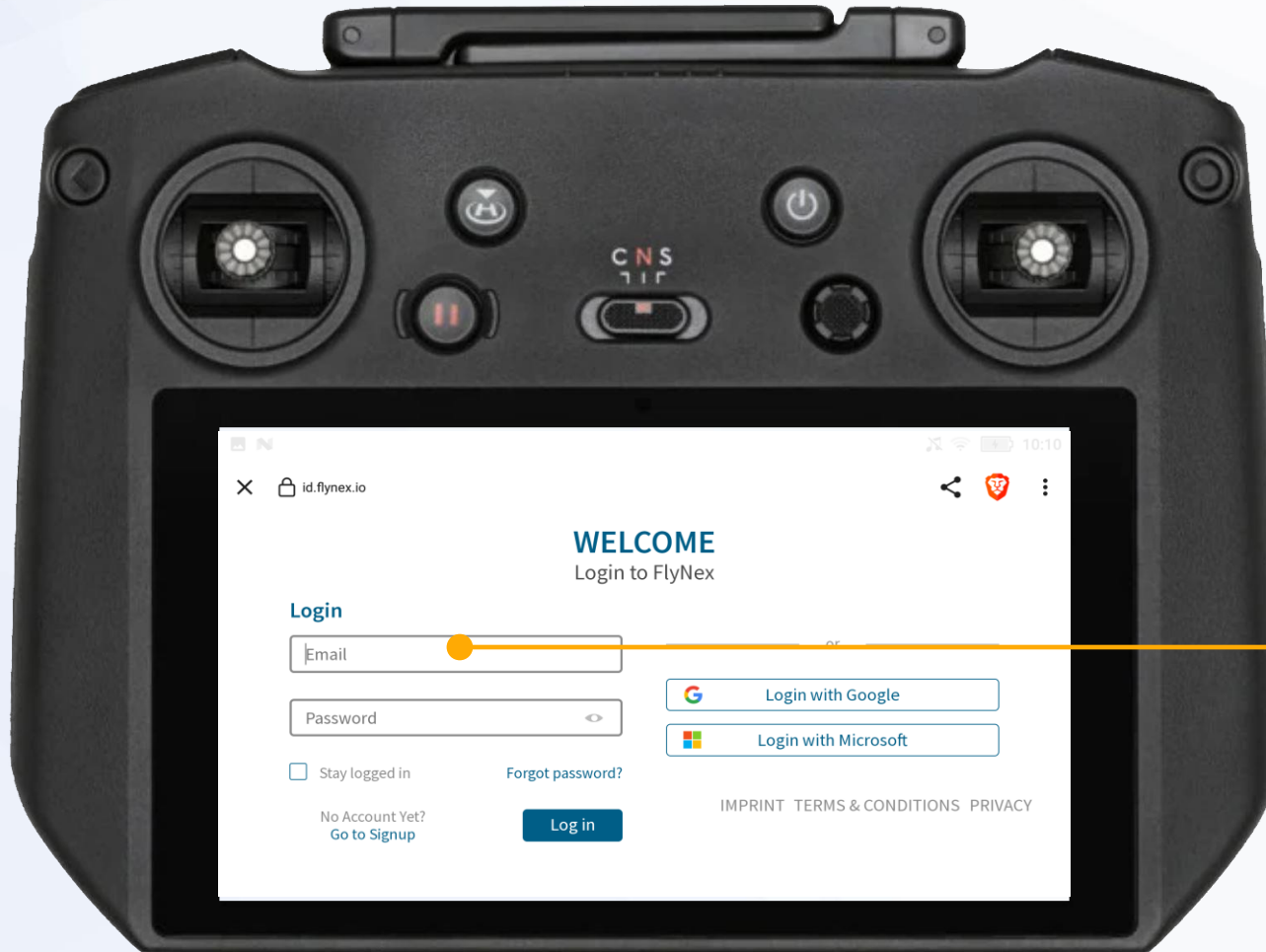
After synchronization, **the setup is complete**. You now have access to all projects in which you are involved via your FlyNex account

For more information regarding the operation of the FlyNex Connect App, please refer to the following pages.

FLYNEX

CONNECT APP
USER MANUAL

LOGIN



Login

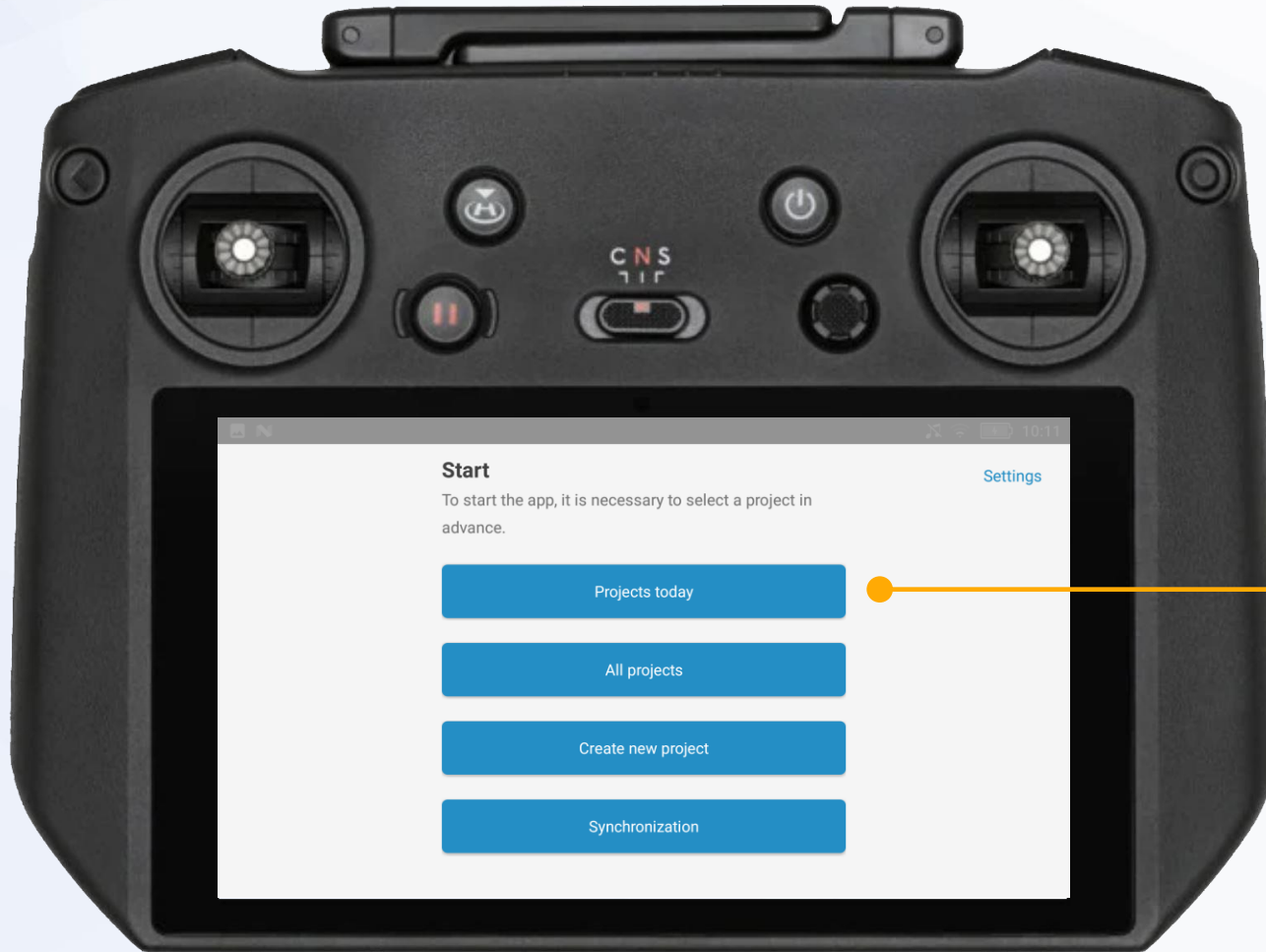
Please log in to your FlyNex account.

If you are logging in for the first time, please follow the instructions for setting up the app (see chapter: „App Setup“).

Confirm your data with the **Log in** button.

Note: If you are unable to log in, please contact your administrator or check your plan in the company account on the FlyNex platform. If you have any further questions, please contact our support.

SELECT AND CREATE PROJECTS



Select project

Choose your project from today's projects or from all projects.

Note: Only projects you are assigned to with your FlyNex account will be displayed.

Create project

You have not created a project before or are not involved in any project? Please select **Create new project** to create a new project directly in the FlyNex Connect App. It will be synchronized with your FlyNex account.

OVERVIEW OF ALL PROJECTS



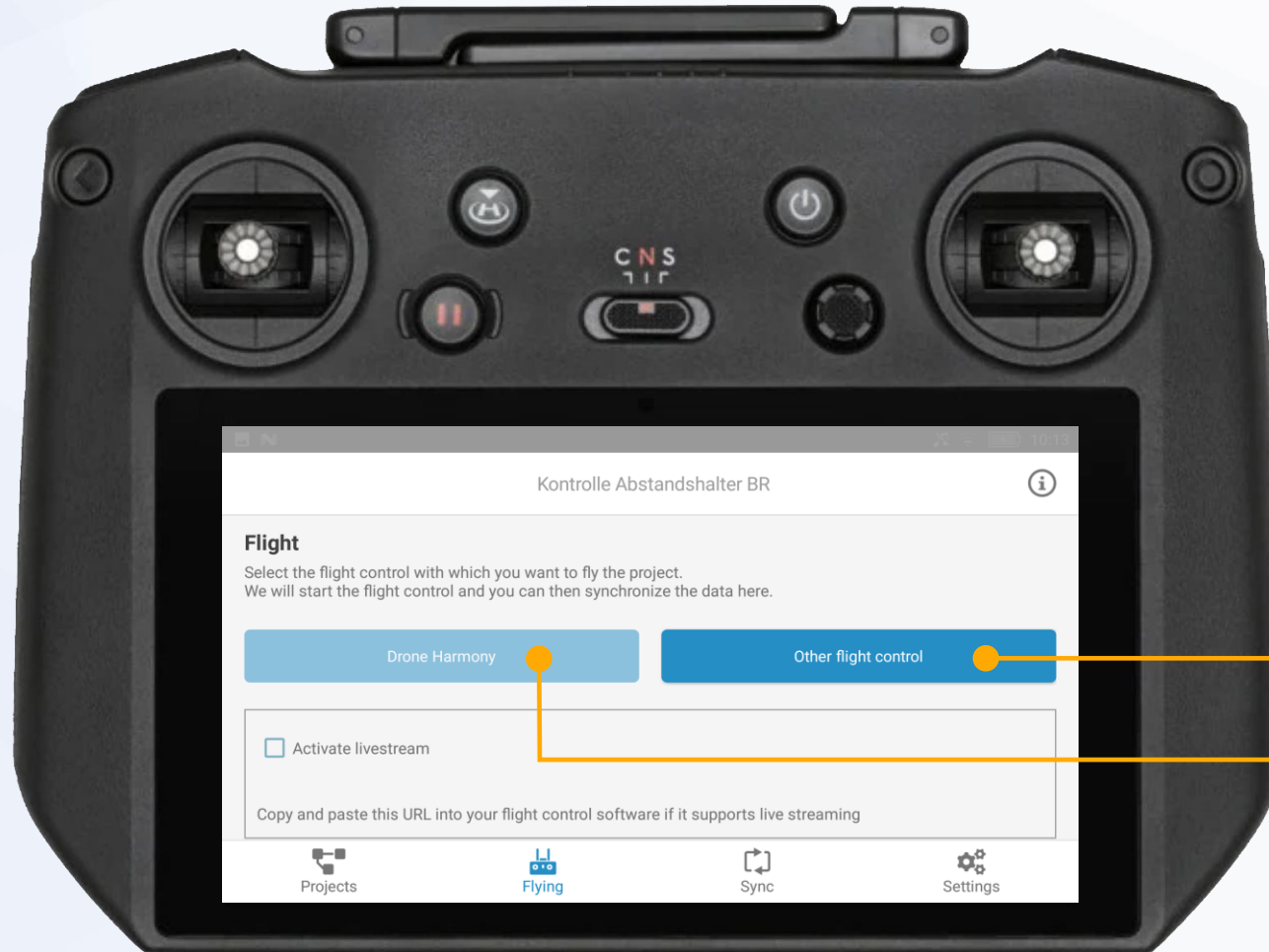
Search project

If you cannot find your project, use the project overview to search in certain time periods and select your project.

Note: Only projects you are assigned to with your FlyNex account will be displayed.

FLIGHT

! The auto flights and live streaming features are only included in the full version.



Other flight control

Choose **Other flight control**, to perform a flight with another flight software.

Auto flights with Drone Harmony

Choose **Drone Harmony**, if a flight plan has already been created in the web application.

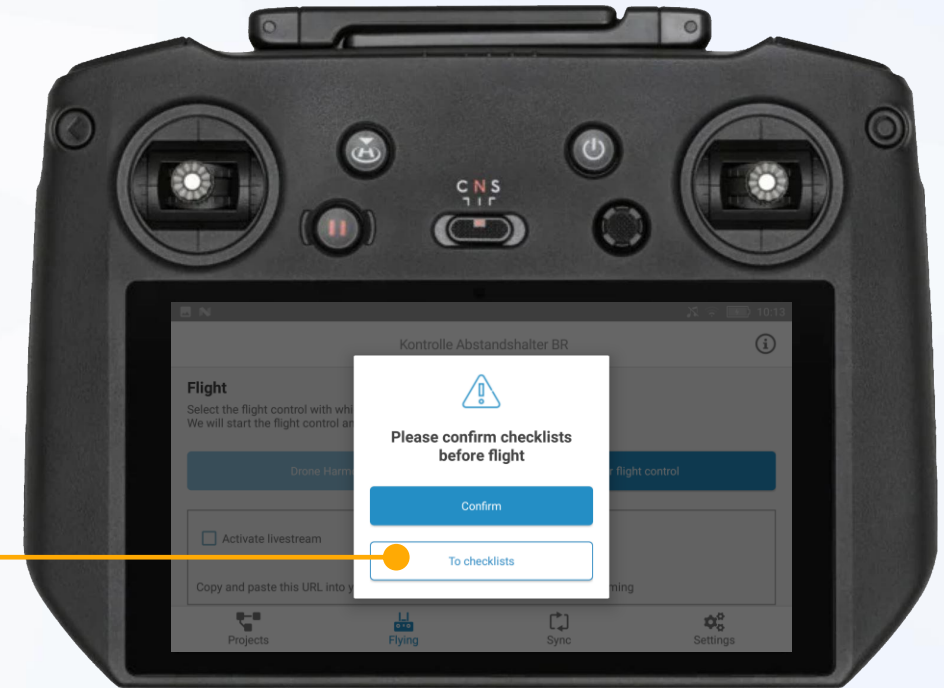
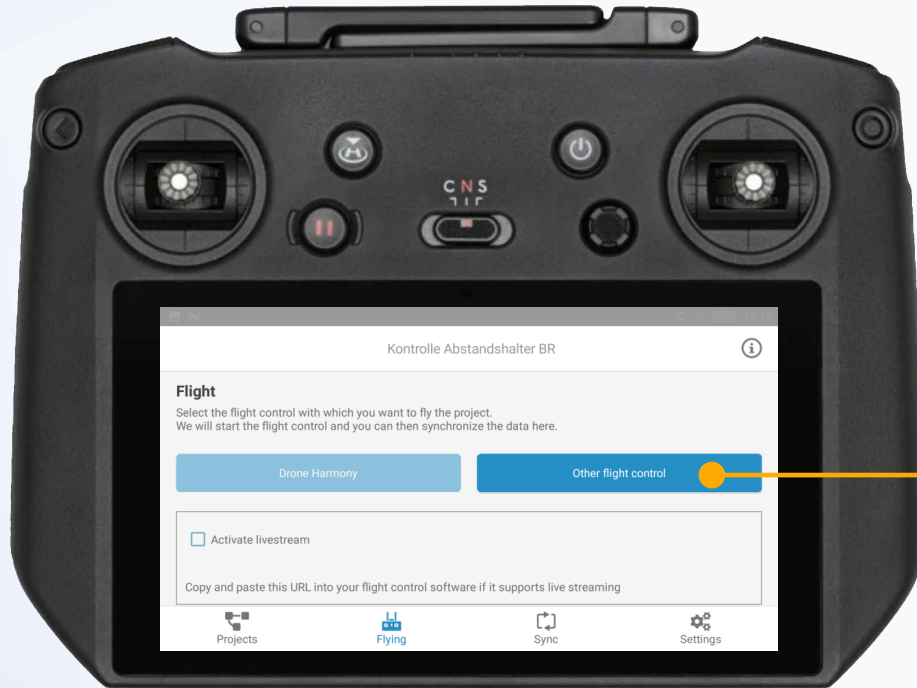
Drone Harmony will be opened automatically, where the automated flight can then be started.

Live streaming

Select **Activate livestream** to generate a Link, that can be inserted in e.g. DJI Pilot (see page 31).

OTHER FLIGHT CONTROL(1)

! The auto flights and live streaming features are only included in the full version.



Start and end flight

After selecting **Other flight control** another window will be opened where the checklist can be edited and confirmed.

Choose **To checklists** for editing.

OTHER FLIGHT CONTROL(2)

! The auto flights and live streaming features are only included in the full version.



Start and end flight

Use the checklist to check and document all safety-related questions before the flight and **Confirm**.

Note: To customize the checklist, please contact our Support.

OTHER FLIGHT CONTROL(3)

! The auto flights and live streaming features are only included in the full version.



Start and end flight

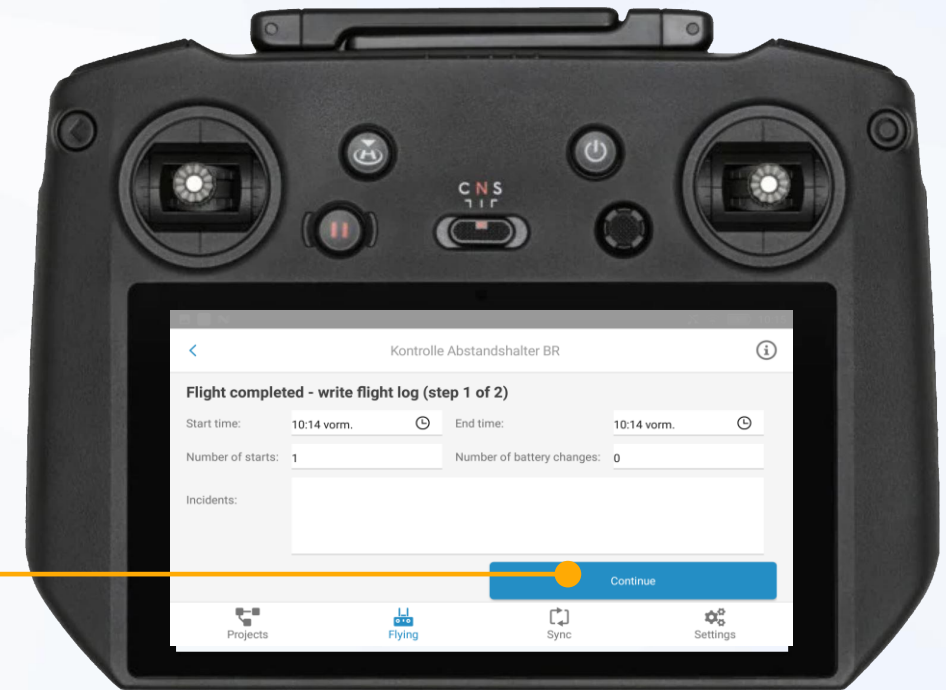
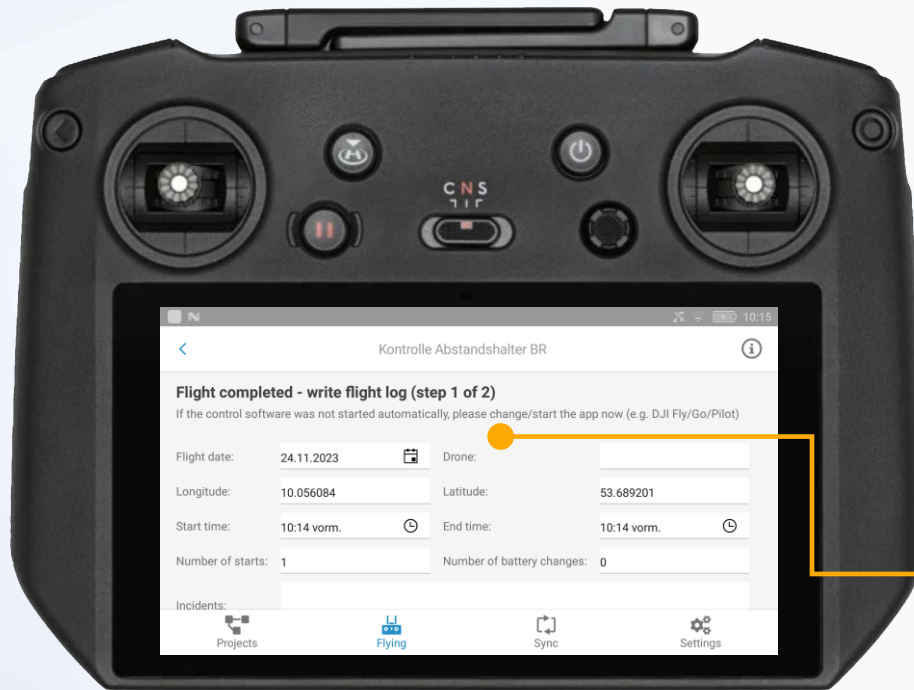
Once the checklist has been confirmed, another window opens where you can use any pre-installed flight software.

- Select one of the installed flight software and **carry out the flight**.
- After completing the flight, land your drone and end the process with the hardware button (see *-button in the top right image).

Note: The flight software will close, and you will get back to the FlyNex Connect App.

OTHER FLIGHT CONTROL(4)

! The auto flights and live streaming features are only included in the full version.



End flight and write flight log

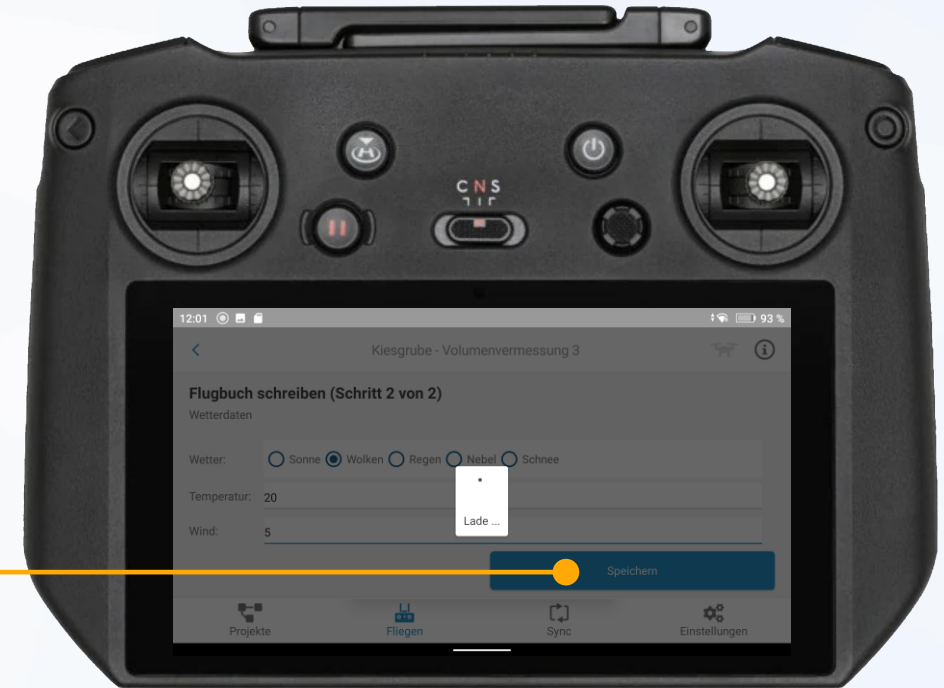
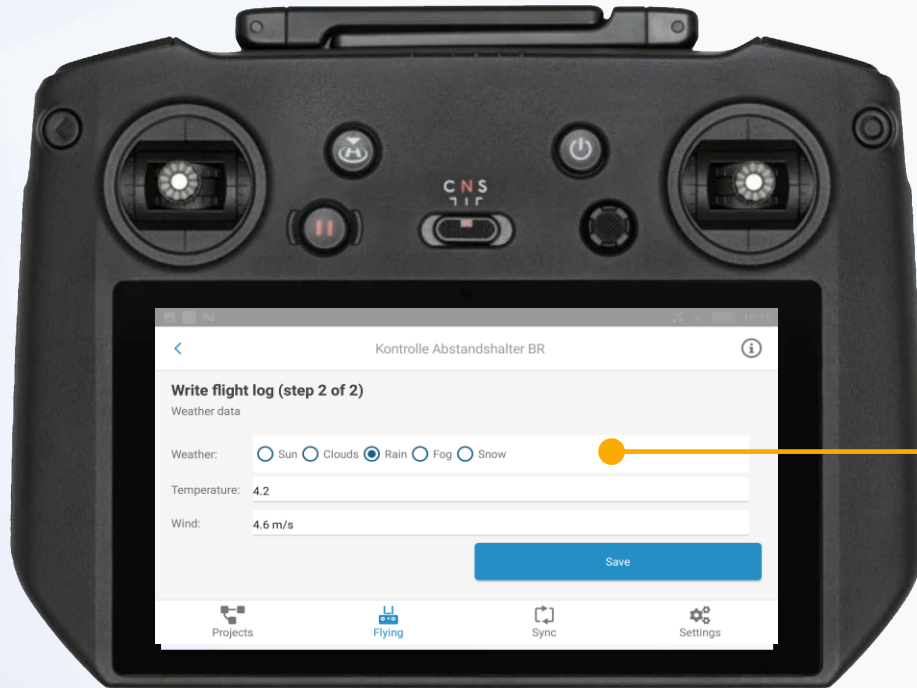
Once the flight software is closed, the flight log in the **FlyNex Connect App** will be opened.

- Enter all relevant information here.
- Confirm the entries with **Continue**.

Note: Some fields are pre-filled based on the project data, location and time.

OTHER FLIGHT CONTROL(5)

! The auto flights and live streaming features are only included in the full version.

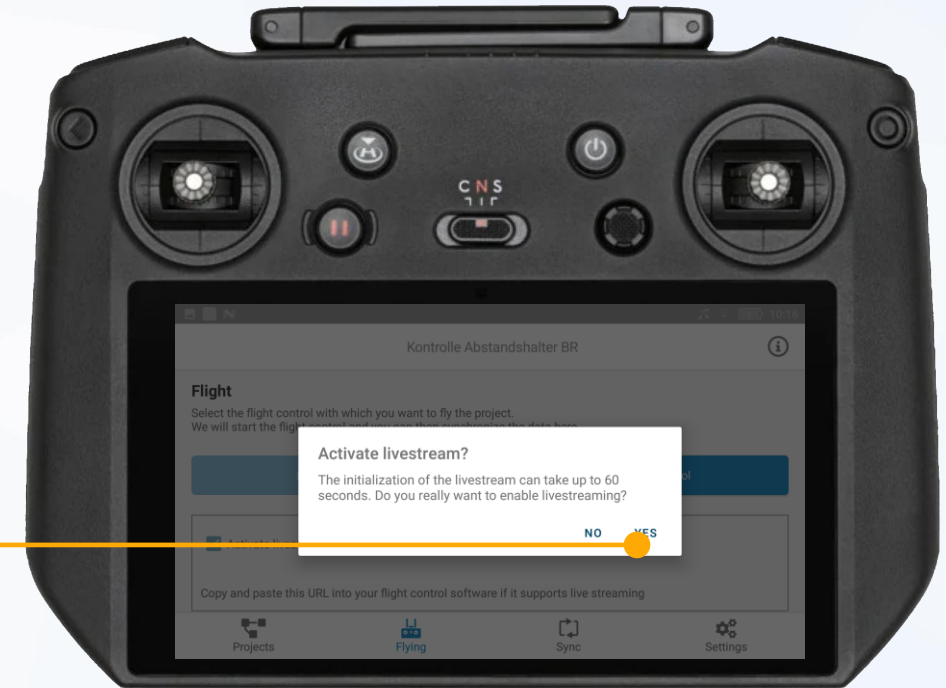
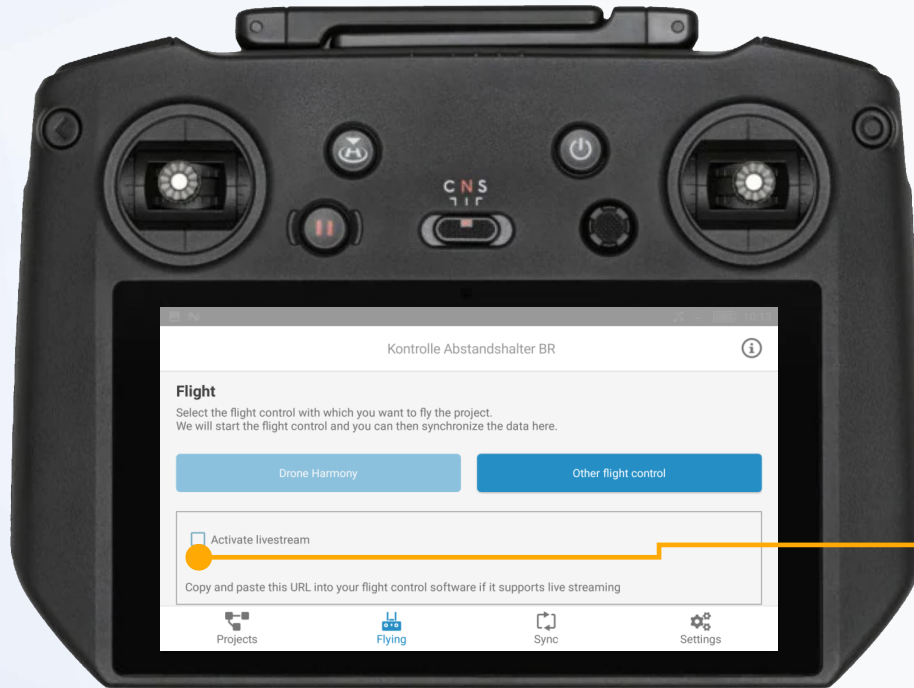


End flight and write flight log

Once all relevant information has been entered, save it with **Save**.

LIVE STREAMING (1)

! The auto flights and live streaming features are only included in the full version.



Live streaming

Transmit the flight recordings of your drone live during the flight to the FlyNex Platform.

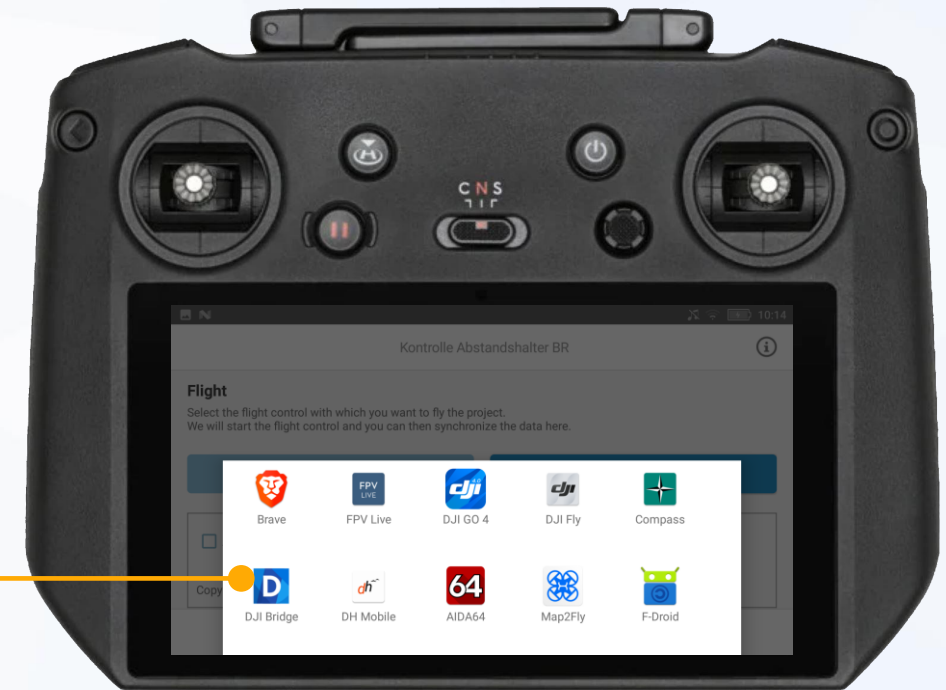
Use of the function

Other flight control

- Select Activate livestreams in the flight menu and confirm the following message with **YES**.

LIVE STREAMING (2)

! The auto flights and live streaming features are only included in the full version.



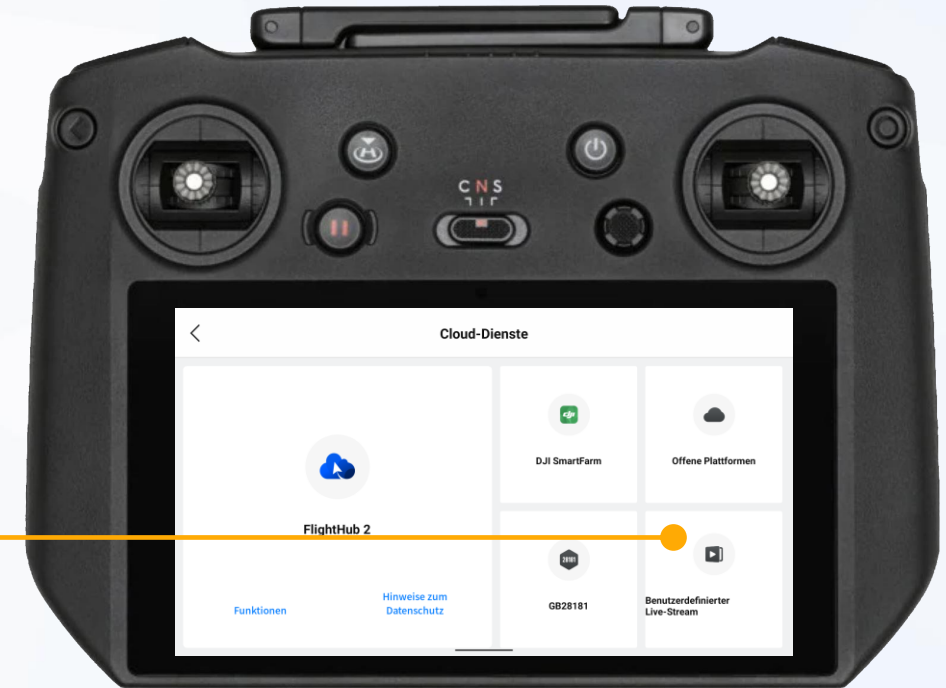
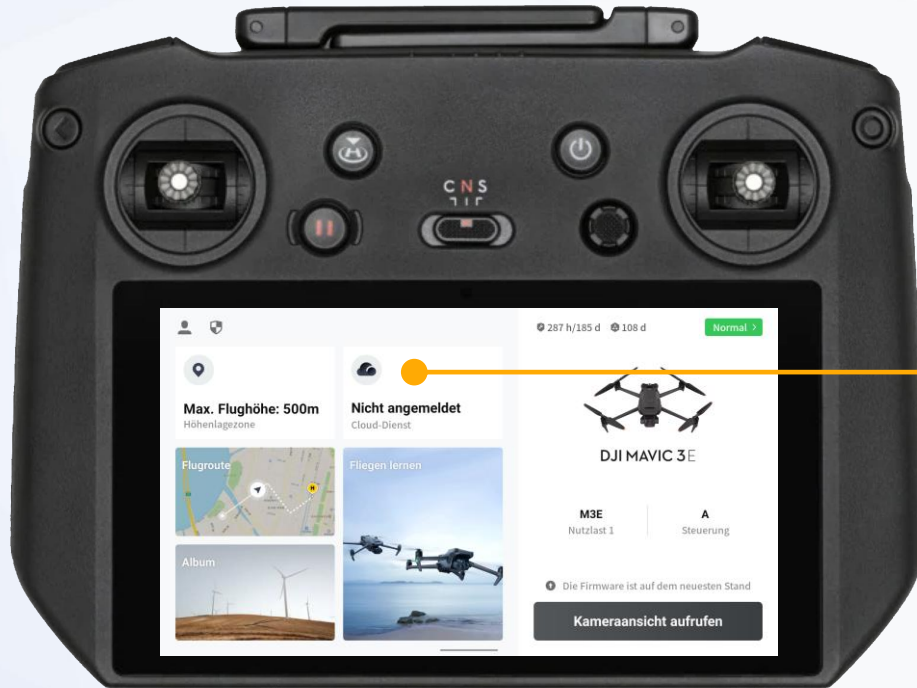
Live streaming function

Copy the link with **Copy** and open a pre-installed flight software via **Other flight control**.

The following example shows the **DJI Pilot** software.

LIVE STREAMING (3)

! The auto flights and live streaming features are only included in the full version.

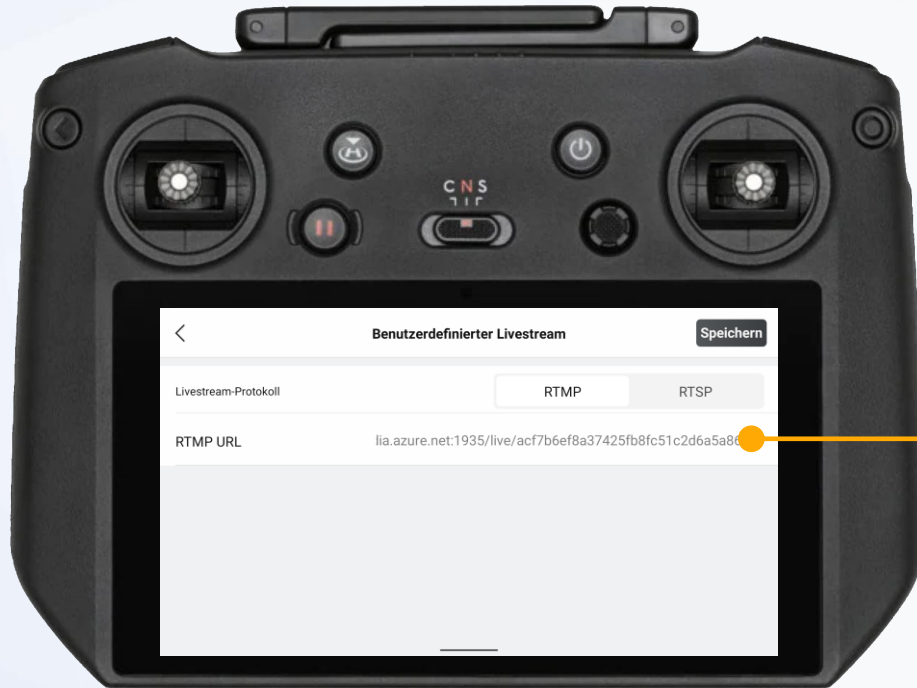


Live streaming function

In the overview window, first select the **Cloud** service function and then **Custom live stream**.

LIVE STREAMING (4)

! The auto flights and live streaming features are only included in the full version.

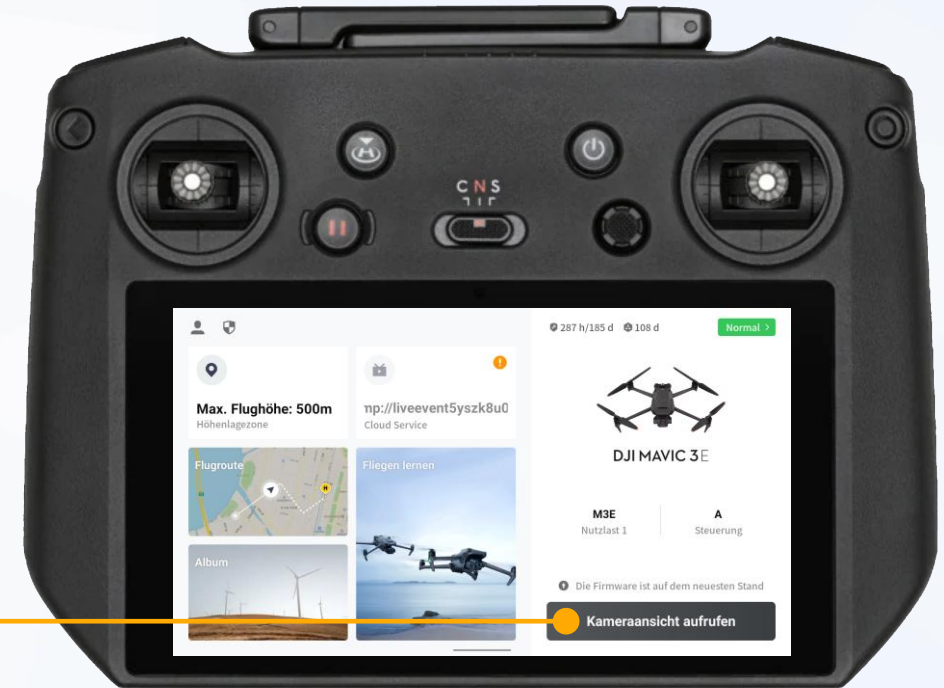
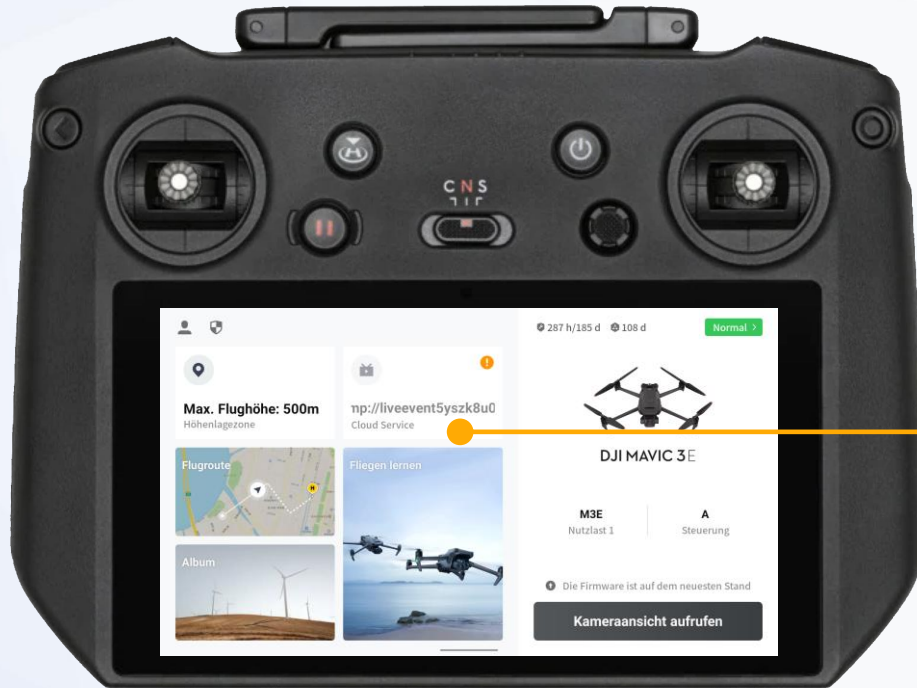


Live streaming function

Insert the link by long pressing in the **RTMP URL** line and click **Save** at the top right. Then leave the are via the < button.

LIVE STREAMING (5)

! The auto flights and live streaming features are only included in the full version.



Live streaming function

The active connection is now displayed in the **Cloud service** area.

Open the **camera view**.

LIVE STREAMING (6)

! The auto flights and live streaming features are only included in the full version.



Live streaming function

To start the live stream, click on the **cloud icon** and then on **Start livestream**.

- You can also pause and end the livestream via the **cloud icon**.
- The live stream is now visible on the FlyNex Platform and available as a video.

Note: The live stream can also be started in other flight software.

The RTMP URL live stream protocol needs to be supported (e.g. **DJI-Fly**).

DATA AND MEDIA SYNCHRONIZATION



Data synchronization

After your flight, select **Sync data** to synchronize your flight data for the flight log, your flight routes and created flight patterns with your **FlyNex account**.

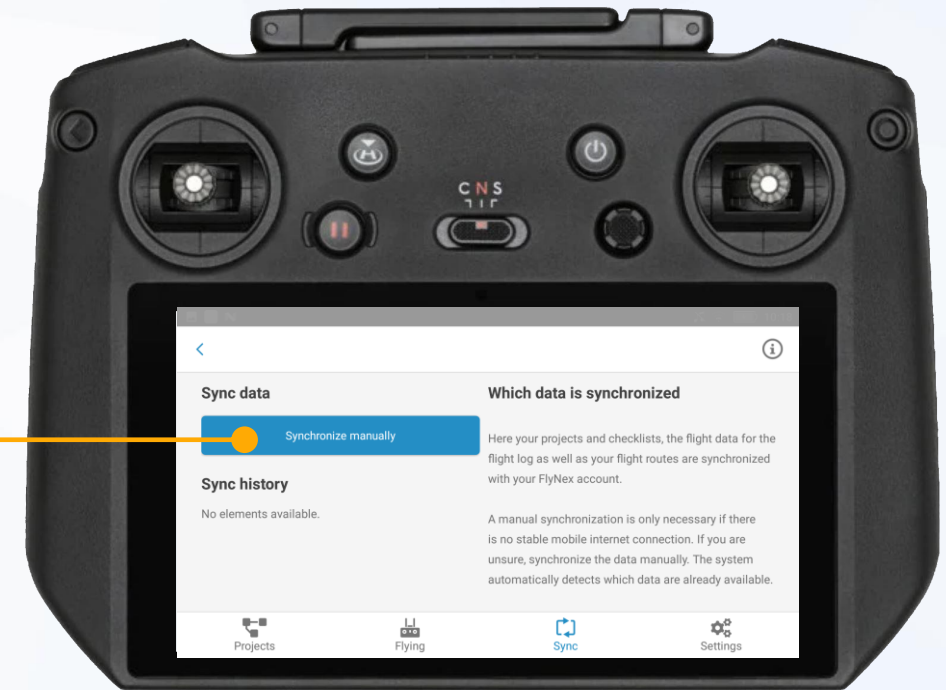
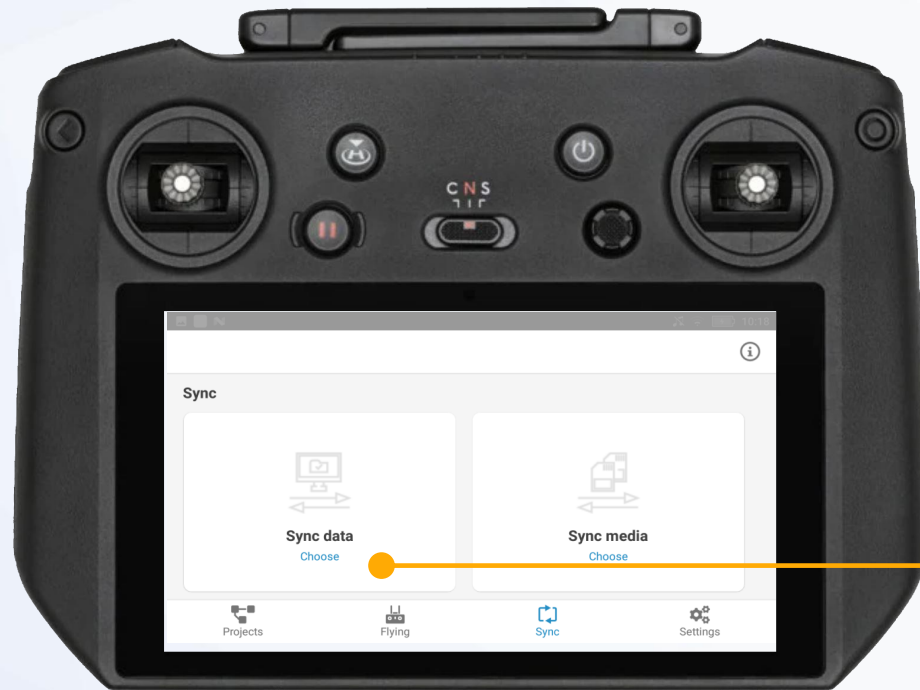
Media synchronization

To sync your drone recordings with your FlyNex account at the operation site, please follow these steps:

- Insert SD memory card from the drone into the drone remote control device
- Tap **Sync media**

Note: Please ensure you have a stable internet connection to transfer your data and media.

DATA SYNCHRONIZATION



Synchronize data

To start data synchronization, please tap **Sync data** and then **Synchronize manually**.

Note: A stable Internet connection is required for secure data transmission.

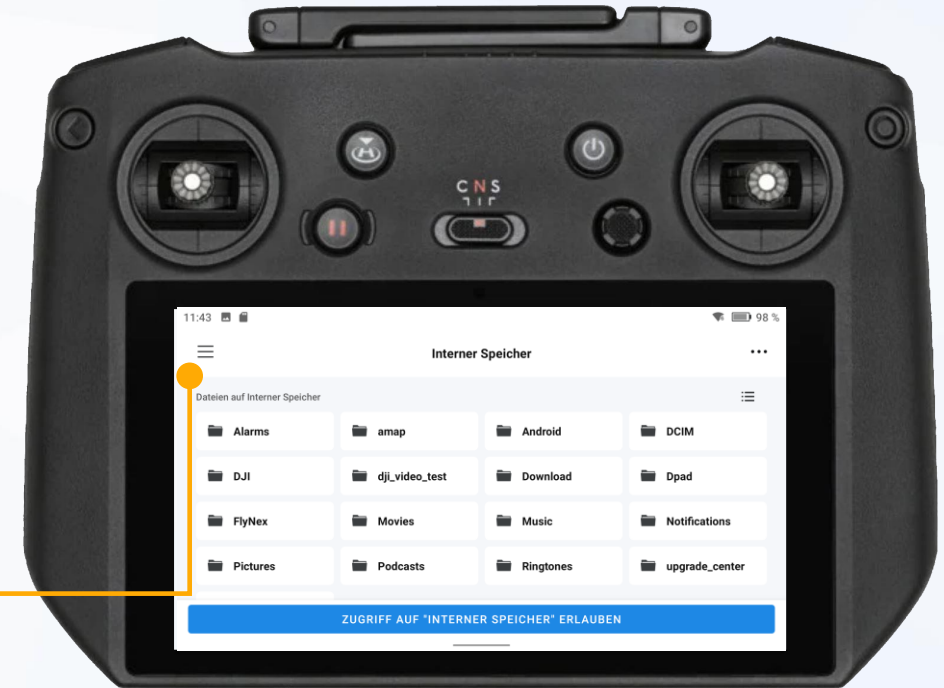
MEDIA SYNCHRONIZATION (1)



Synchronize media

To start media synchronization, click on **Sync media** then next to „No storage found“ tap on **Click here**.

MEDIA SYNCHRONIZATION (2)



Synchronize media

Select the main directory of the SD card on the next screen.

MEDIA SYNCHRONIZATION (3)



Synchronize media

Select the main directory of the SD card and confirm.

MEDIA SYNCHRONIZATION (4)



Synchronize media

Allow access to the SD card.

The SD card is now displayed and you can open it by clicking **Choose**.

MEDIA SYNCHRONIZATION (5)



Synchronize media

Before the media can be uploaded, a unique assignment is required.

To achieve this, click on **New assignment** und and then select the media in the files section with **change**.

MEDIA SYNCHRONIZATION (6)



Synchronize media

Select the media and confirm on the top right.

- In the next step, a project must be selected.
- To select a project, click on **change** in the project section.

MEDIA SYNCHRONIZATION (7)

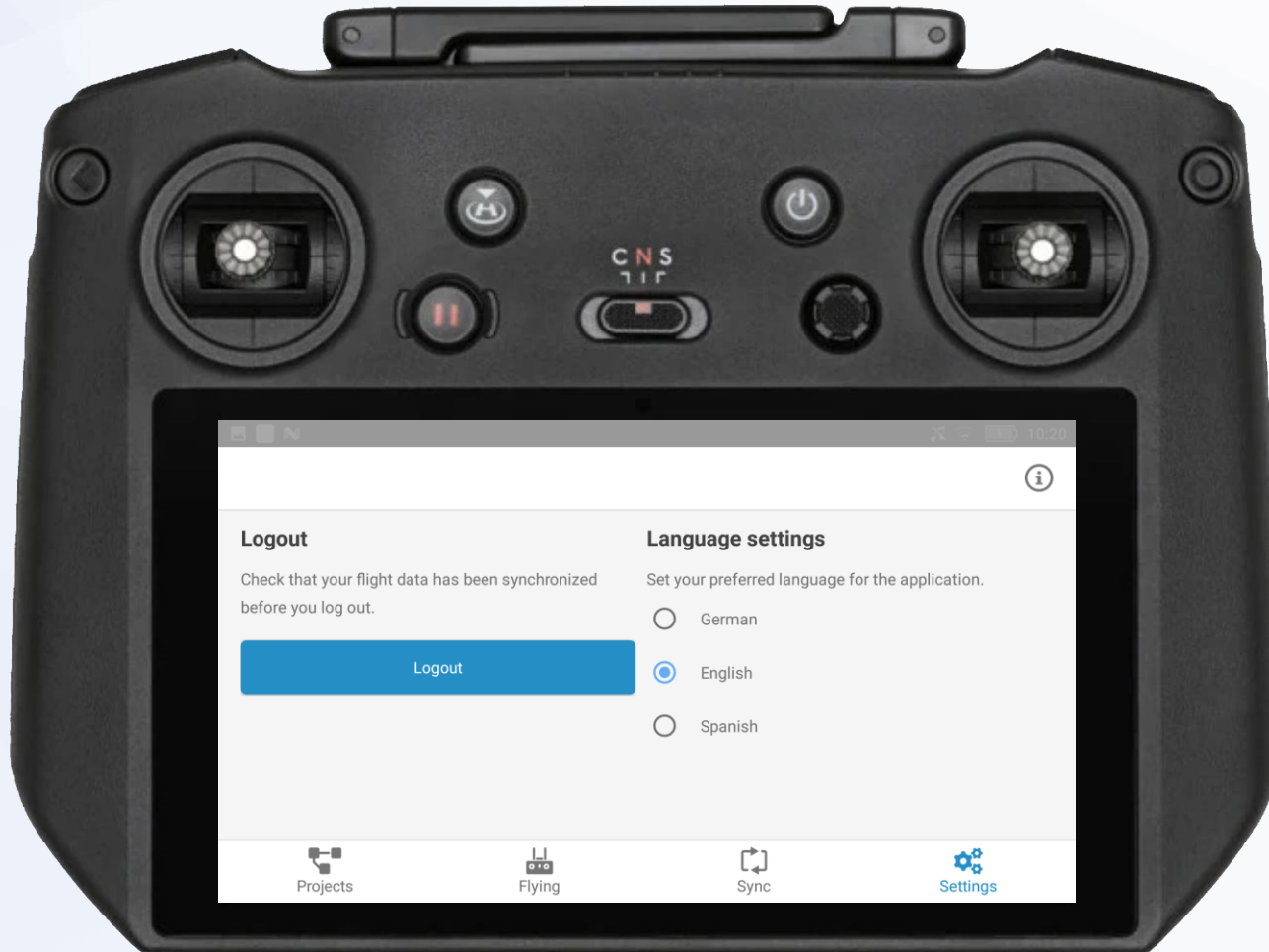


Synchronize media

Select the project in which the media is to be synchronized and start the upload with **Start**.

Note: You can also create additional assignments before your start synchronization.

SETTINGS



Logout

If you want to log out after a flight or sign in another user, please tap **Logout**.

Log in again prior to the next flight with an existing Internet connection.

Note: Perform synchronization prior to each logout to avoid data loss (see chapter “Data and media synchronization”).

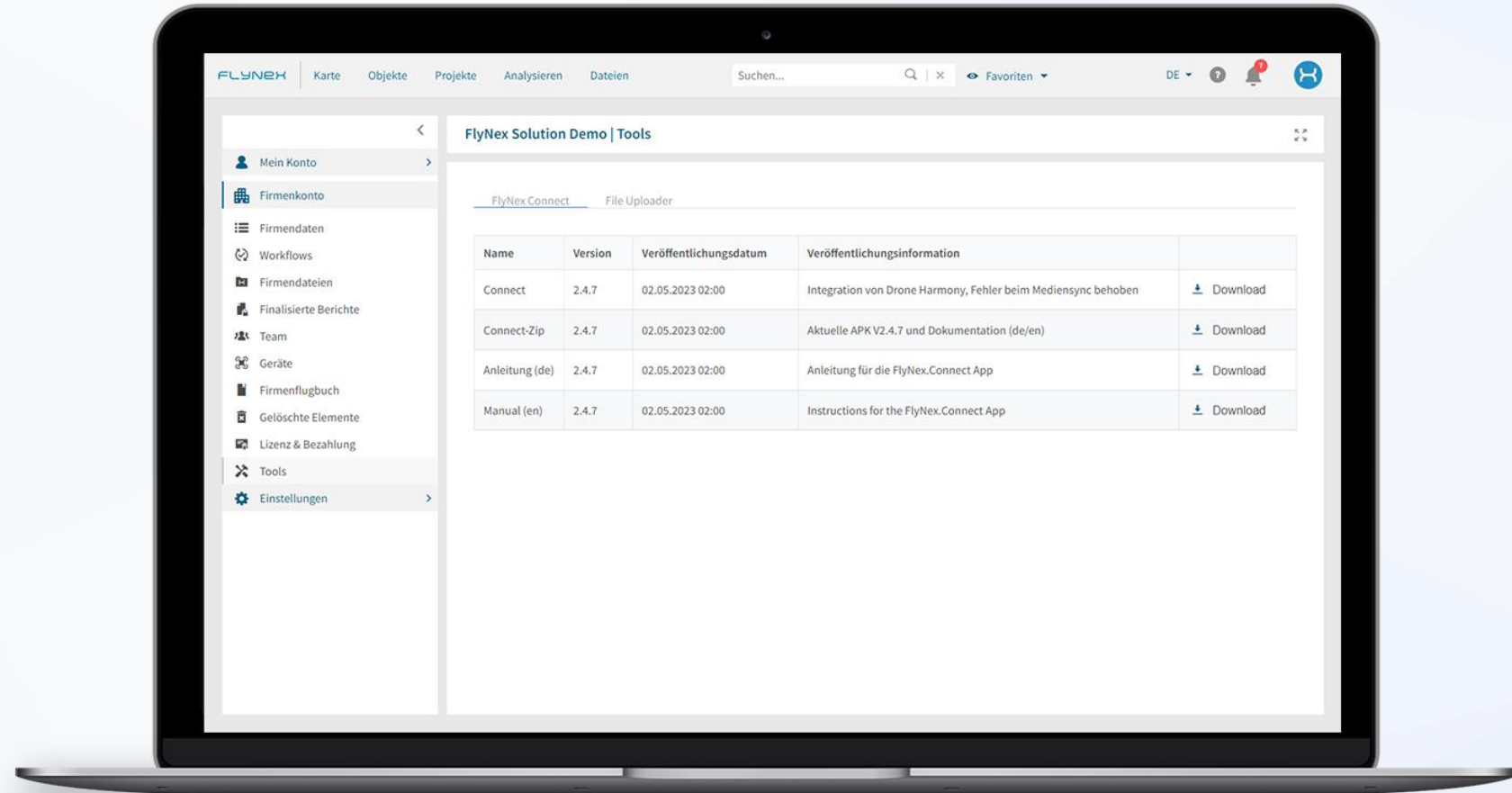
Language settings

You can switch between available languages here.

UPDATES

You can find the latest version of the **FlyNex Connect App** as an installation file on our website or in your company account (s. chapter “Download the installation file”).

To **update** the FlyNex Connect App, please uninstall the old version and repeat the installation steps with the new installation package (s. chapters “Transfer files to device” and “Install app”).



FLYNEX

CONTACT

Do you have any questions about the FlyNex Connect App or the FlyNex Platform?

We are happy to help.

support@flynex.de
www.flynex.io

